



INNOVATIVE
CASH REGISTER SYSTEMS

CATALOG OF BRILLIANT PRODUCTS

THE BEST FOR LESS

TABLE OF CONTENTS

06 Industries We Serve

INDOOR LED by

- 08 Indoor Full Color LED Displays
- 10 Indoor Full Color LED Posters
- 12 Indoor LED Flip Poster
- 14 Flexible Interior LED Displays
- 16 Transparent LED Full Color Window Display

OUTDOOR LED by

- 18 Fine Pitch, Full Color Displays
- 20 Full Color Displays -High Brightness
- 22 Modular, Light Weight Full Color Displays - High Brightness
- 24 Outdoor Mesh Curtain Full Color Displays - High Brightness

LCD by

- 26 Window Posters Double Sided / Single Sided on Stand - High Brightness
- 28 A Frame Displays - Portable - Semi Outdoor
- 30 Outdoor Solar Powered LCD A Frame
- 32 Wall Mounted LCD Screens
- 34 Single & Double Sided Stretch Screens - Wall Mounted, Side Mounting & Shelving
- 36 Indoor LCD Portable Training Unit
- 38 Semi Outdoor and Full Sun LCD TV's with webOS
- 40 Outdoor High Brightness Display
- 42 Outdoor Digital Parking Display

TABLE OF CONTENTS 2

E Paper Displays by

- 44 Outdoor Bus Timetable Displays
- 46 Indoor Full Color A Frame Displays
- 48 Indoor Full Color A Frame Displays

LightBox by

- 50 Static High Bright Lightboxes - Single or Double-Sided

LED SmartScreens

- 52 Interactive 138" LED SmartScreen - Foldable
- 54 Indoor LED Podium
- 56 LED Showcase Counter Cube
- 58 LED Desk Complete Display

EZosk

- 60 Indoor Kiosks - Touch or Non-Touch
- 62 Table-top Kiosk Screen Display
- 64 Self-Service Kiosks - Touch Display with Optional Peripherals
- 66 Car Charging Stations with LCD Display
- 68 Indoor LCD Twin Screen Kiosk
- 70 Outdoor High Brightness Touch or Non-Touch Kiosks
- 72 Drive Thru Menu Boards, Single or Double, High Brightness

Media Players & Video Processors

- 74 Navori Digital Signage Software
- 76 BrightSign Media Players
- 78 NovaStar Video Processors
- 80 Pandora - CloudCover Music Player

INDUSTRIES WE SERVE

Convenience Stores

Illuminology offers a toolbox of 24/7 solutions that will attract and inspire consumers to visit. These include high-brightness window posters, outdoor dynamic signage, interior free-standing kiosks, and interior dynamic signs. Every one of our displays allows you as a user to display promotions, new product introductions, food graphics, and more. This content can be programed to change by day, ensuring the right message is displayed at the right time.



QSR Fast / Casual

Illuminology offers a unique selection of displays perfectly suited to QSR; screens that are bright and designed for 24/7 operation, controlled by award-winning software that allows the user to control the screen from anywhere as long as there is an Internet connection. Displays include high-brightness LED window posters, double-sided LCD window posters, Hight-Brightness Menu Board displays, Free-Standing kiosks, touch-screen ordering kiosks and LCD and LED displays.



Grocery

Dynamic Digital Signage in Grocery is the fastest-growing digital media market worldwide, the adoption of ESL's and end-cap digital displays is widely accepted as the most effective media to inspire, influence, and inform customers at the point of decision. Illuminology supplies displays that are perfectly suited to Grocery, From High Brightness Window displays to outdoor and indoor digital kiosks, both touch and non-touch as well as end cap displays, menu boards, and LED displays.



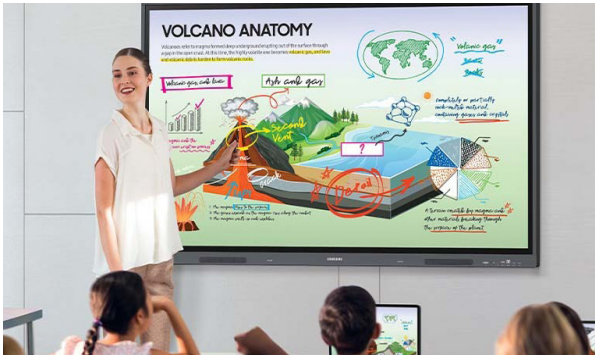
Specialty Retail

Illuminology offers brands a powerful selection of dynamic displays that are used to project your brand to consumers while passing by. Our Ultra High Brightness window displays can be seen in full sunlight and automatically adjust when light conditions are lower. LED wall displays can be any size or shape, Freestanding displays, touch or non-touch, Commercial grade high Brightness LCD screens, and illuminated light-boxes are just some of the powerful in-store media displays we supply.



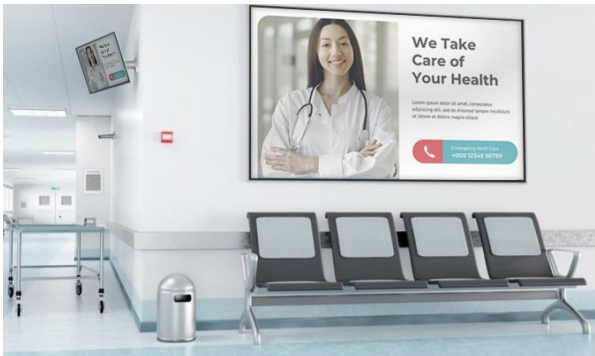
Education

Illuminology carries a full range of digital displays that are perfectly suited for education. Free-standing LED or LCD kiosks, touch or non-touch, can provide up-to-the-minute information to students, faculty, and visitors. Our outdoor LCD high-brightness kiosks are ideal for providing dynamic way-finding. For classrooms and lecture rooms, Illuminology has a range of interactive smart-boards that provide ease of use and incorporate a full set of educational-related features and way-finding solutions.



Healthcare

Visual communication in a healthcare facility is imperative, whether it is way-finding for patients and visitors, information to staff regarding healthcare information, or visual education or entertainment to waiting room patients, our digital displays coupled with industry-leading content management software are the solution that is needed. The digital displays that can be used in healthcare facilities include high brightness LCD screens of various sizes, LCD free-standing touch or touch and non-touch kiosks as well as high definition LED displays where larger size displays are required.



Corporate / Conference Room

Conference room smart-boards, free-standing kiosks, and commercial-grade LCD screens are just some of the dynamic displays offered by Illuminology that are perfectly suited for corporate communications. Illuminology offers a range of LCD and LED smart-boards that are affordable and best in class. Our range of affordable LCD screens offers businesses the opportunity to share important information company-wide at the touch of a button, our content management software by Navori offers easy-to-use solutions for corporate communication.

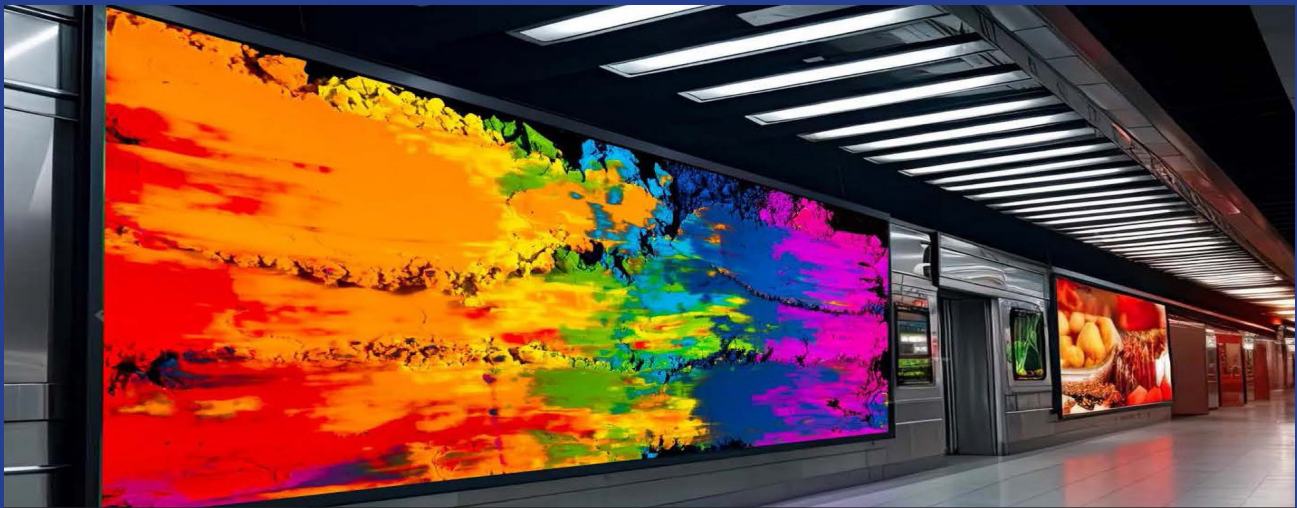


Financial

Visual communication using Illuminology's dynamic media is the best way to inform consumers of the various services and variable rates offered at your financial institution. Our content management software can be tied into your data so that when rates change, the content on the screen will mirror that change, offering your consumers the most up-to-date information about rates and services being offered. Illuminology offers free-standing kiosks that can be used in your lobbies adding convenience for services and investments.

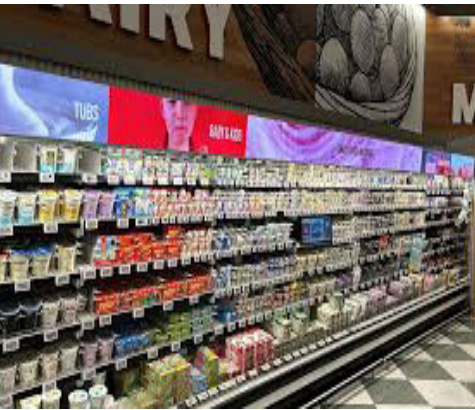


Indoor Full Color LED Display



Versatile Indoor LED System with GOB Protection

- SMD/GOB
- Protective coating over lamps
- Ultra-Light weight cabinets, 5.5kg / 12.1 lbs
- Super Slim, 46.5mm/1.831 inches
- Multiple Size Cabinets - 1000mm X 250mm (39.4" X 9.84"), 750mm X 250mm (29.5" X 9.84"), 500mm X 250mm (19.69" X 9.84"), 250mm X 250mm (9.84" X 9.84")
- FCC and MET, CE, CC, ROHS, EMC



Specifications

Model	P1.9	P2.6	P2.9	P3.9
Pixel Pitch	1.953mm	2.604mm	2.976mm	3.906mm
LED Type	SMD1515	SMD1515	SMD2020	SMD2020
Module Resolution	128dots*128dots	96dots*96dots	84dots*84dots	64dots*64dots
Driving Mode	1/32 scan	1/32 scan	1/28 scan	1/16 scan
Module Size	250mm*250mm			
Cabinet Size(W*H*D)	1000*250mm/750*250mm/500*500mm/500*250mm/250*250mm			
Pixel Density	262,144dots/M²	147,456dots/m²	112,896dots/m²	65,536dots/m²
Viewing Distance	≥1.9m	≥2.6m	≥2.9m	≥3.9m
Brightness	≥800 nits			
Protection Level	IP43			
Refresh Rate	3840HZ			
Grey Scale	13bits~16bits			
Best Viewing Angle	V:160° / H°160°			
Max Power Consumption	600w/m²	550w/m²	400w/m²	430w/m²
Avg Power Consumption	180w/m²	160w/m²	120w/m²	125w/m²
Input Voltage	AC110V-240V @ 50Hz~60Hz			
Operating Temperature/Humidity	-20°C~50°C / 10%~90%RH			
Cabinet Material	Die Cast Aluminum			



Indoor LED Full Color Poster Stands



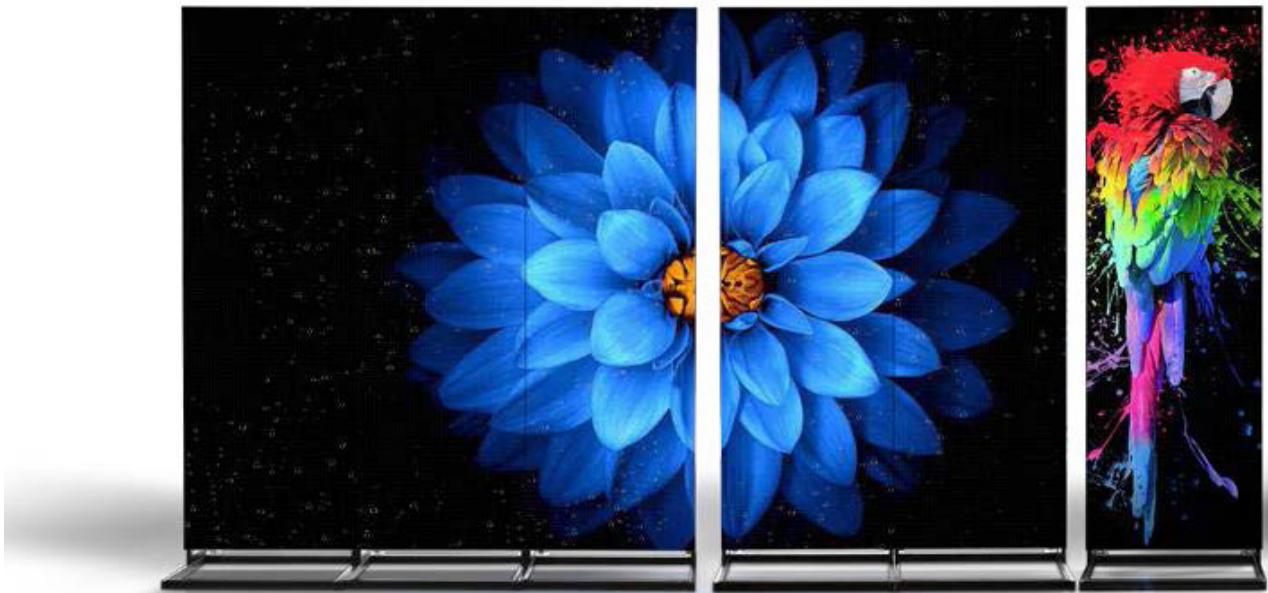
Bright and Impactful Dynamic LED Posters

- Multi Screen Splicing Ability (Up to 5 screens can be joined together)
- SMD GOB Protection
- Poster Size: 630mm Wide X 2055mm High (24.8" Wide X 80.9" High), Screen Size 600mm X 2025mm (23.6" Wide X 79.7" High)
- Brightness: 800 Nits
- Castors or Fixed
- Wide Viewing Angle
- Weight: 39kg / 86lbs
- On-board Android Media Player and Controller
- Connect via Wi Fi, Smart Phone or via Network
- Connectivity via Ethernet, Wi-Fi, USB, Smart Phone
- Surface and lamps protected from damage with GOB
- CE, FCC, MET
- Available Resolutions in mm: 1.8mm, 2mm, 3.1mm



Specifications

Model	P1.8	P2.5	P3.1
Pixel Pitch(mm)	1.875	2.5	3.125
Resolution(WxH)	320x1080	240x810	192x648
Operating System	Android	Android	Android
Screen Display Size(mm)	600x2025	600x2025	600x2025
Total Size(WxHxD)(mm) (With frame)	630x2055x42.6	630x2055x42.6	630x2055x42.6
Weight(kg/screen)	39	39	39
Grey Scale(Bit)	14	14	14
Refresh Rate(Hz)	≥3840	≥3840	≥3840
Contrast Rate	6000:1	6000:1	6000:1
Brightness(nits)	0-800 (10-level adjustment)	0-800 (10-level adjustment)	0-800 (10-level adjustment)
Viewing Angle(H°/V°)	160°/160°	160°/160°	160°/160°
Video Interface	HDMI*2(1 Input and 1 Output), USB2.0*2		
Audio Interface	External Audio Interface		
Video Format	MP4,AVI,WMV,etc.		
AC Input Power Max./Avg/(W/screen)	520W/155W	600W/200W	600W/200W
Control interface	Rj45, WIFI, AP Local Network, 4G Network (Optional)		
Installation/Maintenance	Free Standing / Hanging / Wall Mounted		



Indoor LED Flip Poster



LED Foldable Plug-and-play All-in-one solution

- Multiple sizes available up to 2.744m tall (1x0.5x1.75m; 1x.05x2.25m; 1x0.5x2m
- SMD GOB Protection
- Poster Size: 630mm Wide X 2055mm High (24.8" Wide X 80.9" High), Screen Size 600mm X 2025mm (23.6" Wide X 79.7" High)
- Adjustable Brightness: 600-4000 Nits
- Wide Viewing Angle
- On-board Android Media Player and Controller
- Connect via Wi Fi, Smart Phone or via Network
- Connectivity via Ethernet, Wi-Fi, USB, Smart Phone
- Link up to four for dynamic video walls, immersice corner displays or right-angle configurations
- CE, FCC, MET
- Standard formats to bold 3D visuals
- Pixel Pitch - 1.953mm, 2.6mm, 3.91mm



Specifications

Specification can be customized

Pixel Pitch	1.953mm	2.6mm	3.91mm
LED Configuration	SMD1212	SMD1515	SMD2020
Pixel Density	262,144dot/m²	147,456dot/m²	65,536dot/m²
Module size	250*250mm	250*250mm	250*250mm
Module Resolution	128*128dots	96*96dots	64*64dots
Display Size(W*H)	1000*1750mm; 1000*2000mm; 1000*2250mm		
Display Weight /PCS	85.5kg; 95kg; 103.5kg		
Package Dimension(LxWxH)	1215x600x1720mm		
Package Weight /PCS	68kg		
IP Rating(front/back)	IP20	IP20	IP20
Brightness	600-3000 cd/m²	2500-3500cd /m²	2500-3500cd /m²
Viewing Angle	160°/160°	160°/160°	160°/160°
View Distance	>1.9m	>2.6m	>3.9m
Gray scale	14bit	14bit	14bit
Max.Power Consumption	550W/m²	550W/m²	550W/m²
Ave.Power Consumption	160W/m²	160W/m²	160W/m²
Refresh Frequency	≥3840Hz	≥3840Hz	≥3840Hz
Environmental	indoor/semi-outdoor	indoor/semi-outdoor	indoor/semi-outdoor
Brightness Adjustment	0-255 levelsadjustable	0-255 levelsadjustable	0-255 levelsadjustable
Operation Power	AC100-240V 50/60Hz	AC100-240V 50/60Hz	AC100-240V 50/60Hz



BENEFITS OF THE FOLDABLE DESIGN:

- Easy to install
- Convenient to store



BENEFITS OF THE WHEELED DESIGN:

- Easy to move
- Ideal for rental businesses



Flexible Interior LED Displays



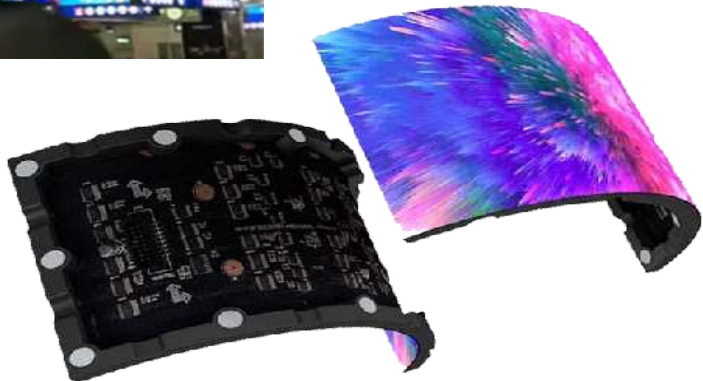
Fine Pitch, Flexible, Concave or Convex, Full Color LED Display

- Soft PCB, Concave or Convex
- Magnetic Backing on each module
- 8mm thickness and .6kg per module
- Brightness: 600 to 700 Nits
- Wide Viewing Angle
- Available Resolutions in mm: 1.8mm, 2mm, 2.5mm, 3mm



Specifications

Model	P1.8	P2	P2.5	P3
Pixel Pitch(mm)	1.86mm	1.875mm	2.5mm	3mm
Physical Density	289,050dots/m ²	284,089dots/m ²	160,000dots/m ²	110,889dots/m ²
LED Arrangement	3 in 1 SMD	3 in 1 SMD	3 in 1 SMD	3 in 1 SMD
Module Resolution	172x86pixels	128x64pixels	96x48pixels	80x40pixels
Module Dimensions	320x160mm	240x120mm	240x120mm	240x120mm
Cabinet Dimensions	custom size			
Brightness	800nits			
Max Power Consumption	600w/m ²	695w/m ²	695w/m ²	695w/m ²
Avg Power Consumption	200w/m ²	232w/m ²	232w/m ²	232w/m ²
Viewing Angle	160°(H) /160°(V)			
Operating Power Source	110-240V AC /50-60Hz			
Operating Temperature	-20°C~+50°C			
Refresh Rate	3,840Hz			
IP Rating	IP30			
Signal Input Source	Composite, S-Video, Component, HDMI, SDI, HD, VGA, DVI			
Certificate	ETL, FCC, CCC, RoHS, CE			



Transparent LED Window Mesh Display



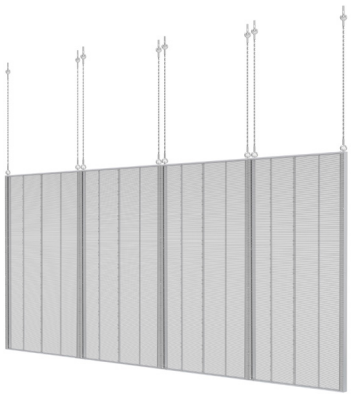
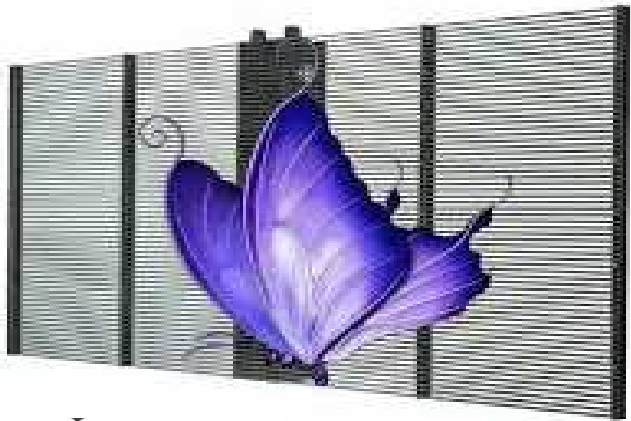
High Brightness Dynamic Window Poster, 24/7 Messaging

- Transparency 42% to 85%
- Display Sizes: 1750mm High X 1000mm Wide (70" High X 39" Wide), Custom Sizes are available in 250mm (9.84") Widths
- High Brightness, Up to 5000 Nits
- Easy Installation
- Wide Viewing Angle
- SMD / GOB
- FCC, MET
- Available Resolutions in mm: 1.9mm / 3.9mm, 2.8mm / 5.6mm, 3.9mm / 7.8mm



Specifications

Model	P1	P2	P3
Pixel Pitch(mm)	1.9*3.9	2.8*5.6	3.9*7.8
Pixel Density (dot/m²)	129,024	61,952	32,768
Module Resolution (dots)	252*16	176*22	128*16
Cabinet Resolution (dots)	504*128	352*88	256*16
Transparency	42%	45%	65%
Brightness (nits)	800-4,500	800-5,500	800-5,500
Power Requirements	100V~240V ± 10% ; AC 50/60 Hz		
Power Consumption	high brightness models: 800W/m² ; low and medium brightness models: 400W/m²		
Refresh Rate	≥190Hz		
Operating Temperature	-10°C - 45°C		
Weight	10kg per m²		
Cabinet Size	1000*500mm		



Outdoor Fine Pitch, Full Color LED Displays



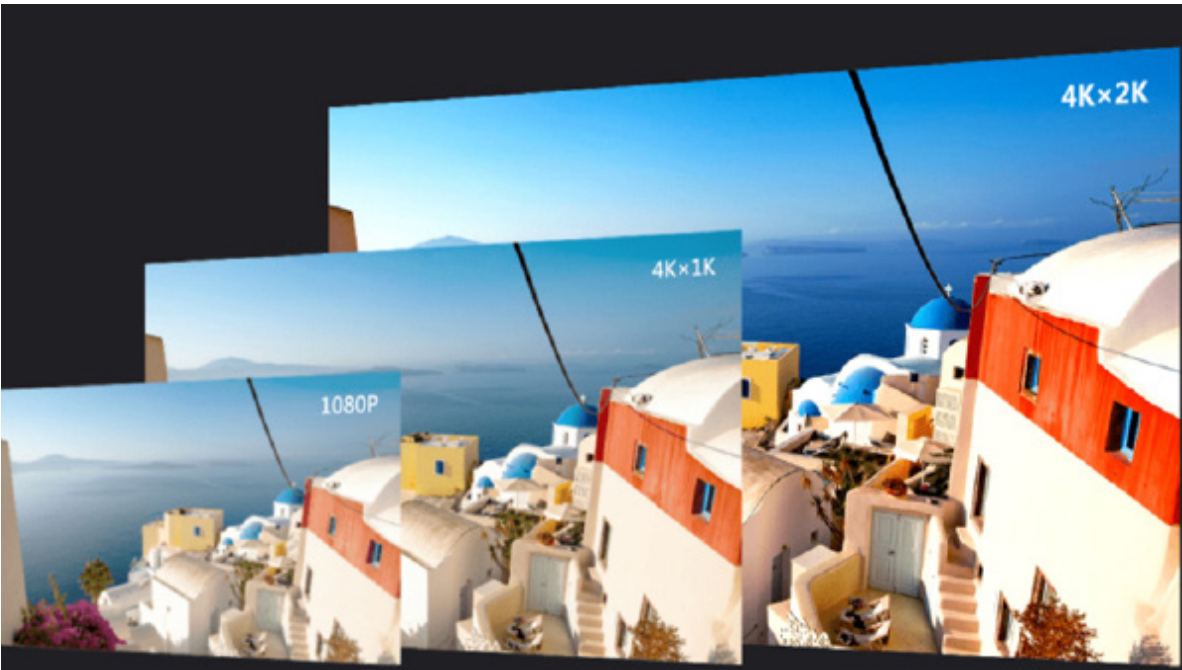
Versatile Fine Pitch Outdoor LED IP67 Displays

- Front and Rear Maintenance
- Cast Aluminum cabinets, accuracy, heat dissipation, slim design
- Slim Display in depth, 70mm / 2.75 inches for single sided, 140mm / 5.5 inches for double sided
- Angled cabinet edge for shaped displays
- Multiple cabinet sizes: 1250mm x 250mm (49.2" X 9.84"), 1000mm x 250mm (39.4" X 9.84"), 750mm x 250mm (29.5" X 9.84"), 500mm x 250mm (19.69" X 9.84"), 250mm x 250mm (9.84" X 9.84")
- Hight Brightness >4500 Nits
- IP65
- FCC, UL, CE, ROHS, CCC, EMC
- Available resolutions in mm: 2.6mm, 2.9mm, 3.9mm, 4.8mm



Specifications

Model	P2.6	P2.9	P3.9	P4.8
LED Type	SMD1415	SMD1415	SMD1921	SMD1921
Pixel Pitch(mm)	2.6	2.97	3.91	4.81
Pixel Composition	1R1G1B	1R1G1B	1R1G1B	1R1G1B
Module Resolution(dots)(WxH)	96x96	84x84	64x64	52x52
Module Size(mm)	250x250	250x250	250x250	250x250
Module layout(WxH)	5x1	5x1	5x1	5x1
Cabinet Resolution(dots)(WxH)	480x96	420x84	320x64	260x52
Cabinet Size(mm)	1250X250x70/1000X250x70/750x250x70/500x250x70/250X250x70			
Net.Weight/Cabinet(kg)	9			
Serviceability	100%Front & 100%Rear			
Brightness(cd/sqm)	>4500			
Refresh Rate(Hz)	1920~3840			
Contrast Ratio	3000:1			
Grey Scale(bit)	14			
Working Voltage(AC/V)	100-240			
Max./Avg. Power Consumption(w/m²)	720-240			
Viewing Angle(H/V)(°)	160/160			
Ingress Protection	IP65/IP65			
Operation Temperature/Humidity	-20°C~+60°C/10~95%RH			
Certificates	CCC/CE/FCC/UL/EMC/RoHs/Blue Light Proof/Energy Conservation			



Outdoor High Brightness Full Color LED Displays



Versatile and Lightweight Outdoor LED IP65

- Front and Rear Maintenance
- Light Weight
- IP65 Waterproof System
- Cast Aluminum Cabinets, accuracy, heat dissipation, slim design
- Slim display in depth, 120mm / 4.72 inches
- Two cabinet sizes: 1000mm X 1000mm (39.8" X 39.8"), 960mm X 960mm (37.8" X 37.8")
- Hight Brightness >6000 Nits to 8000 Nits
- FDD, MET
- Available Resolutions in mm: 3.9mm, 4.8mm, 5.9mm, 6mm, 8mm, 10mm



Specifications

Model	P2.6	P2.9	P3.9	P4.8	P4.8	P4.8
Light Source	SMD1921			SMD2727		
Module Size(mm)	250*250	250*250	250*250	240*240	240*240	240*240
Module Resolution(dots/m°)	64*64	52*52	42*42	40*40	30*30	24*24
Pixel Density(dots/m°)	65536	43264	28224	27777	15625	10000
Scanning Mode (scan)	1/8	1/7	1/6	1/5	1/3	1/2
Brightness(nits)	≥6000			≥6000/8000		
Cabinet Size(mm)	1000x1000x120 or customized			960x960x120 or customized		
Cabinet Resolution(dots)	256x256	192x192	168x168	160x160	120x120	96x96
Refresh Rate	3840Hz					
Grey Scale	14bits					
Power Consumption(Max./Avg.)	950w/m², 320 w/m²					
Cabinet Weight (KG)	35kg/m²					
Cabinet Material	Steel cabinet with aluminum door					
IP Grade (F/B)	IP65					
Working Temperature (°C)	-20~+50					



Outdoor modular LED Display



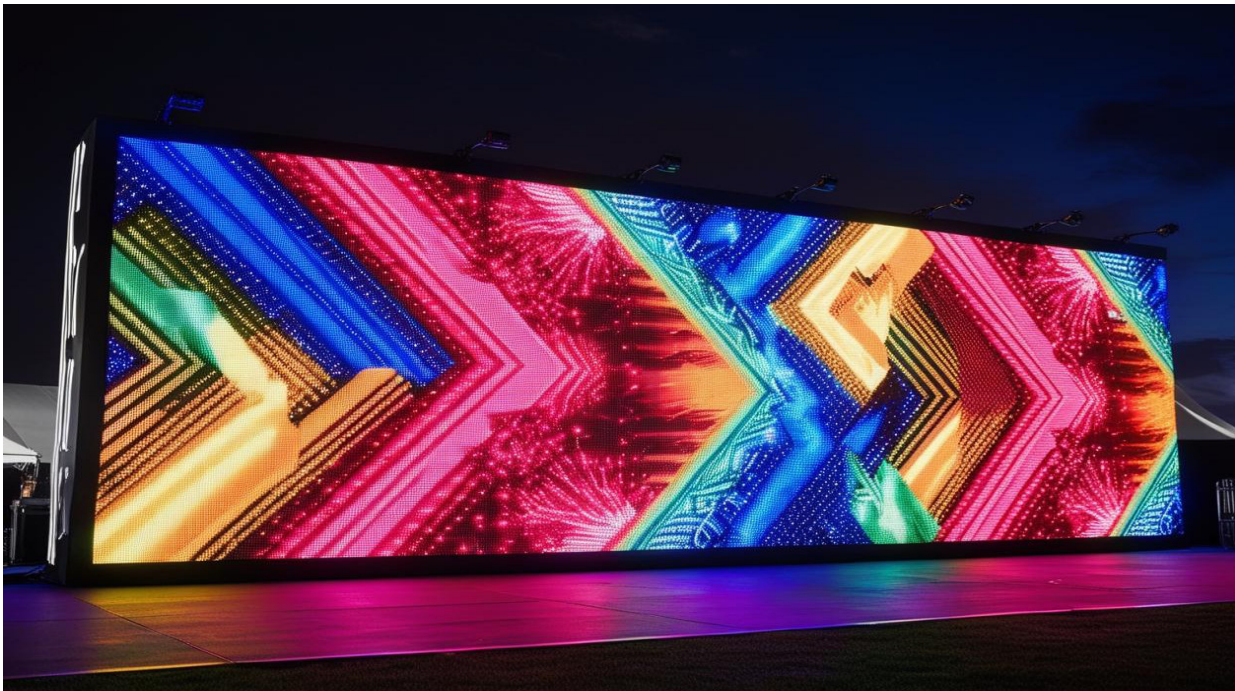
Super Lightweight, High Bright and Versatile

- Front and Rear Maintenance
- Super Light Weight
- IP65 Waterproof System
- Cabinet Size: 2 Feet X 1 Foot
- Display Sizes: 8' X 4', 8" X 5', 6' X 4', 6' X 3'
- Hight Brightness >6000 Nits to 10000 Nits
- Available Resolutions in mm: 4.7mm, 6.3mm, 7.6mm, 9.5mm



Specifications

Model	P4.7	P6.3	P7.6	P9.5
Pixel Pitch	4.7625mm	6.35mm	7.62mm	9.525mm
LED Type	SMD1921	SMD2727	SMD2727	SMD2727
Module Resolution	128dots x 64dots	96dots x 48dots	80dots x 80dots	64dots x 32dots
Driving Mode	1/8scan	1/6scan	1/2scan	1/2scan
Module Pixels	8192dots	4608dots	1600dots	2048dots
Pixel Density	44,088dots/m²	24,800dots/m²	17,222dots/m²	11,022dots/m²
Module/Cabinet Size	2ft * 1ft	2ft * 1ft	2ft * 1ft	2ft * 1ft
Viewing Distance	≥4.7 m	≥6.3 m	≥7.62 m	≥9.5 m
Brightness	6,000nits ~ 7,000nits	6,000nits ~ 9,000nits	6,000nits ~ 9,000nits	6,000nits ~ 10,000nits
IP Grade	IP65			
Refresh Rate	3,840Hz			
Grey Scale	14bits			
Viewing Angle	H:160° / V:160°			
Power Consumption (Max./Avg. m²)	≤600W, 230W/m²			
Input Voltage	AC110V - AC220V @ 50Hz/60Hz			
Operating Temperature	-20°C~45°C/10%~90% RH			
Material	Aluminum			
Compatible System	Windows (Win8, Win10 etc.)			
Signal Source	DVI, HDMI 1.3, DP 1.2, SDI, HDMI 2.0, etc.			



Outdoor LED Mesh Screen



Ideal for Large Outdoor Screens, Transparent, Lightweight and High Brightness

- Super Light Weight, 13KG per Square Meter or 2.6lbs per Square Foot
- Ultra Low Power Consumption, 150 watts per square meter
- IP65 Waterproof System
- Hight Transparency, up to 68%
- Cabinet Sizes: 900mm X 500mm (35.43" X 19.68"), 500mm X 1000mm (19.68" X 39.4"), 500mm X 1500mm (19.68" X 59")
- High Brightness: Up to 10000 Nits
- Front and Rear Maintenance
- Available Resolutions in mm: 10/12.5mm, 15.625mm, 15mm/31mm, 25mm, 31mm/31mm



Specifications

Model	P10/12.5	PH15.625	PH15/31	PH25	PH31/31
Pixel Pitch	10/12.5mm	15.625mm	15.625/31.2mm	25mm	31.25/31.25mm
Pixel Model	SMD2727	DIP346	DIP346	DIP346	DIP346
Module Size	900mm*125mm	23.8mm*1000mm	10mm*1000mm	10mm*1500mm	10mm*1000mm
Module Resolution	900dotsx10dots	2dots*64dots	1dots*64dots	1dots*60dots	1dots*32dots
Module Density	8000dots/m²	4096dots/m²	2048dots/m²	1600dots/m²	1024dots/m²
Cabinet Material	Alu Cabinet	Alu Cabinet	Alu Cabinet	Alu Cabinet	Alu Cabinet
Cabinet Size(W*H)	900mm*500mm	500mm*1000mm	500mm*1000mm	500mm*1500mm	500mm*1500mm
Cabinet Weight	7.5kg	7.5kg	7.5kg	9kg	9kg
Best Viewing Distance	>10m	>16m	>20m	>25m	>31m
Brightness	8500cd/m²	9000cd/m²	10,000cd/m²	10,000cd/m²	9000cd/m²
Power Consumption (Max./Avg. m²)	≤800w,320w/m²	≤680w,272w/m²	≤600w,240w/m²	≤480w,160w/m²	≤455w,150w/m²
Best Viewing Angle	≤140°				
Gray Scale	16bits				
Color Temperature	6500K				
Refresh Frequency	3840Hz				
Working Voltage	AC220V/110V±10%				
Working Temperature	-20°C~50°C±10%				
IP Grade	IP65	IP65	IP65	IP65	IP65
Transparency	40%	32%	68%	60%	68%



Indoor LCD Window Posters
Double Sided or Single Sided



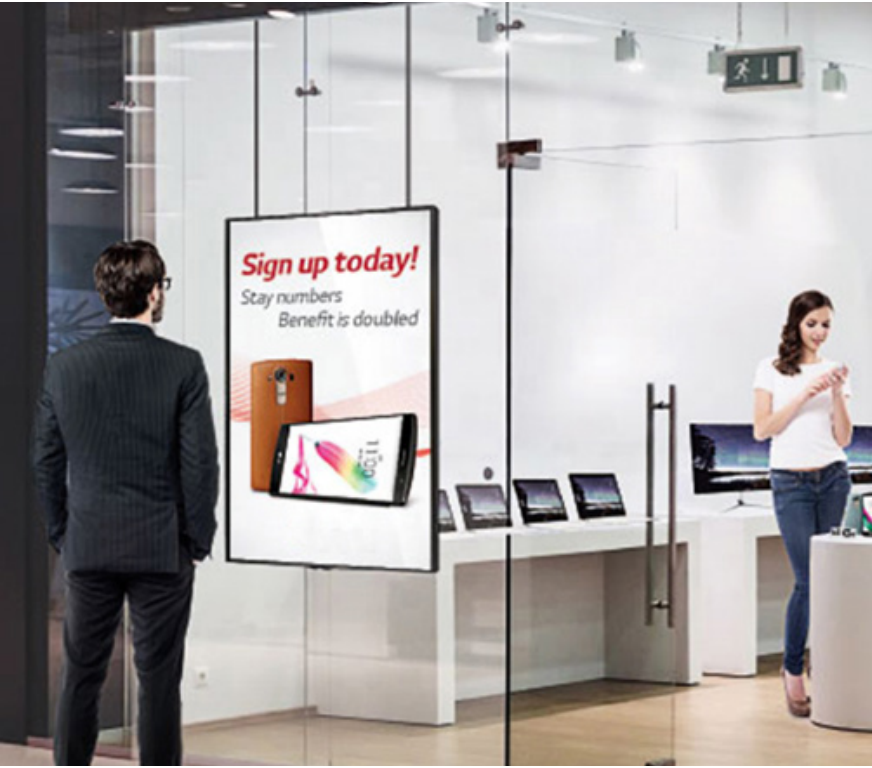
43" and 55" High Brightness Dynamic LCD Window Posters with built in controller. Hanging or on Stand

- Versatile Mounting Options
- Lightweight, Slim Enclosure
- 24/7 Commercial Use
- Ultra Resistant to Blackening
- 500-3500 Nits High Brightness
- 2K Resolution clearly displays menus, posters, videos or information
- Screen can be enhanced with laminated tempered glass for explosion-proof and sun-proof



Specifications

Model	Single Sided	Double Sided	Single Sided	Double Sided
Panel Model	43" TFT LED	43" TFT LED	55" TFT LED	55" TFT LED
Max Resolution	1920x1080	1920x1080	1920x1080	1920x1080
Aspect Ratio	16:09	16:09	16:09	16:09
Pixel Pitch	0.4903x0.4903	0.4903x0.4903	0.63x0.63	0.63x0.63
Viewing Angle	89/89/89/89	89/89/89/89	89/89/89/89	89/89/89/89
Contrast Ratio	1200:1	1200:1	1400:1	1400:1
Brightness (cd/m²)	500 to 3500 Nits	500 to 3500 Nits	500 to 3500 Nits	500 to 3500 Nits
Display Area (mm)	941.184x529.416	941.184x529.416	1209.6x680.4	1209.6x680.4
Panel Size (mm)	969x563.9x26	969x563.9x26	1244.6x720.9x27	1244.6x720.9x27



A-Frame LCD Display, Semi-Outdoor



43" Portable A Frame Display, Battery Powered, High Brightness Dynamic LCD with Built In Controller

- Anti-Reflective LCD Display for Optimal Readability
- Built-in Battery provides 12 hours of power supply
- Ambient Light Sensor for Auto Brightness Adjustment
- Rear-Mounted Speaker
- IP65 Waterproof and Dust-Proof rating
- Locking Wheels for Enhanced Stability and Prevention of Unwanted Movement
- Portable and Lightweight



Specifications

Specification:		
Model No.:	LSR13001041	LSR13001043
Panel		
LCD Panel Type	43inch	43inch
Resolution	1920*1080	1920*1080
Backlight	LED	LED
Brightness	1500nits	2500nits
Contrast Ratio	1200:01:00	1200:01:00
Color Depth	8 bits	8 bits
Response Time	8 ms (typ)	8 ms (typ)
Viewing Angle	178° / 178°	178° / 178°
Light Life Time	50,000 hrs (typ.)	50,000 hrs (typ.)
POWER		
Power Supply	Internal	
Rated Voltage	Charger with power input 110V or 220V, 50 Hz / 60 Hz	
Rechargeable Battery	43.2Ah battery capability	62.4Ah battery capability
Charing time	4.5 hours	8 hours
Power Consumption	<98W	<135W
USER INTERFACE		
Language	English / Multi Language option	
ENVIRONMENT		
Operating Temperature	-20° C ~ 60° C	
Storage Temperature	-10° C ~ 60° C	
Humidity	10% ~ 80% RH Non-condensing	
INTERNAL PLAYER		
Processor	ARM Quad-core Cortex-A55 up to 1.9GHz	
Main memory interface	2GB DDR3	
Graphics	Mali-G31 GPU	
Storage (FDM)	eMMC 16GB(about 2GB occupied by o/s)	
Multimedia	Decoder: 4K/8K,H.265; Encoder: 1080P 100fps H.265/H.264	
IO ports	USB 2.0 x2, RJ45 x 1, HDMI input*1, MicroSD*1	
Operating system	Android 9.0	
Network	WLAN 802.11 b/g/n (2.4GHz) ,RJ45	
ENVIRONMENT		
Storage Temp	(-20 -- 65 degree)	
Working Temp	(0 -- 50 degree)	
Storage/Working Humidity	(10 -- 90%)	
CERTIFICATION		
CE, FCC&Rohs	CE&Rohs	
MECHANICAL SPECS		
Orientation	Portrait	
Cabinet Color	Black	
Product Dimension (LxHxD) mm	1257.5*594*180.45mm	1257.5*594*182.451mm
CTN Dimension (LxHxD) cm	138*28*71.5cm	138*28*71.5cm
Weight (N.W)	43KG	47.2KG
Weight (G.W/ Carton)	48KG	57KG



Outdoor Solar Power LCD Display



43" AFrame (Digital Sandwich Board) Outdoor Batter Powered and Solar Powered LCD Display

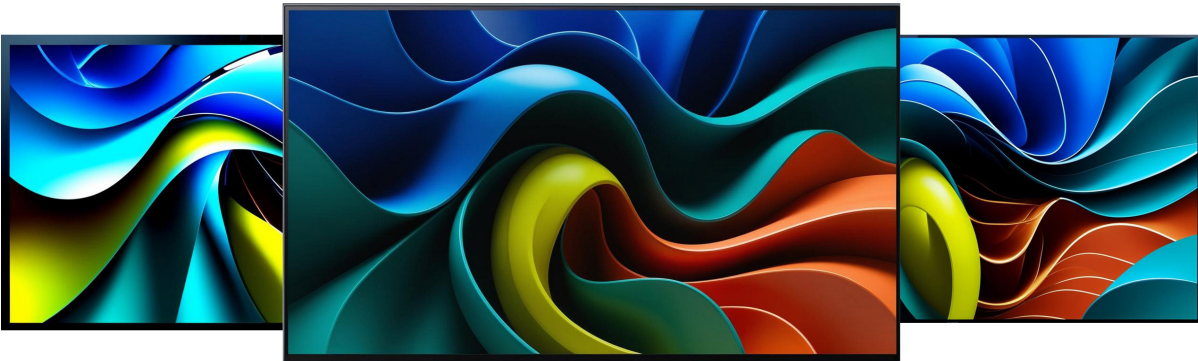
- Solar Powered
- Built-in Battery
- 1500 NITS High Brightness
- IP65 Waterproof
- Integrated Android Player
- Ambient Light Sensor
- 4." 1080P FHD LCD High Brightness
- CNC Aluminum Alloy Casing, Tempered Glass



Specifications

LST12001019	
Panel	
LCD Panel Type Resolution	43inch 1920*1080
Backlight	LED
Brightness	1500NITS
Contrast Ratio	1200:1
Color Depth	8 bits
Response Time	8 ms (typ)
Viewing Angle	178° / 178°
Light Life Time	50,000 hrs (typ.)
POWER	Internal
Power Supply	100 V ~ 240 V, 50 Hz / 60 Hz
Rated Voltage	10-14 Hr sBattery Playtime
Rechargeable Battery	
Power Consumption	<98W
USER INTERFACE	English / Multi Language option
Language	
I/O PORTS	
HDMI	YES
Audio	N/A
ENVIRONMENT	-20° C ~ 60° C
Operating Temperature	-10° C ~ 60° C
Storage Temperature	10% ~ 80% RH Non-condensing
Humidity	
INTERNAL PLAYER	Quad-core Cortex-A55 up to 2.0GHz
Processor	2GB DDR3
Main memory interface	Mail-G52
Graphics	EMMC 32GB
Storage (FDM)	H.264 encoder/decoder, MPEG-1/2/4, H.263,H.264 MVC, AVS, VC-1, VP8/6, RV
Multimedia	USB3.0*2, HDMI *1 micro SD slot x1
IO ports	Android 11 OS
Operating system	WLAN 802.11 b/g/n (2.4GHz) ,RJ45
Network	
ENVIRONMENT	
Storage Temp	(-20 -- 65 degree)
Working Temp	(0 -- 50 degree)
Storage/Working Humidity	(10 -- 90 %)
CERTIFICATION	
CE, FCC&RoHS	
MECHANICAL SPECS	
Orientation	Portrait
Cabinet Color	Black
Dimension (LxHxD)	1022x589mm
CTN Dimension (LxHxD)	1117x669x165mm
Weight (N.W)	47KG
Weight (G.W)	52KG (Carton)

Indoor “Best For Less” - LCD Displays



LCD Displays with touch or non-touch surface, all sizes, Medium to High Brightness, Vesa Mounts

- Wall-mounted LCD Display for Indoor
- A Variety of sizes and specifications available: 43", 49", 55", 65", 75"
- Horizontal/Vertical Screen Free Switching
- Accurate Capacitive Touchscreen with Auto-calibration
- A Wide Range of Playback Formats
- Endless Possibilities of Application Ideas to fit any Industry need

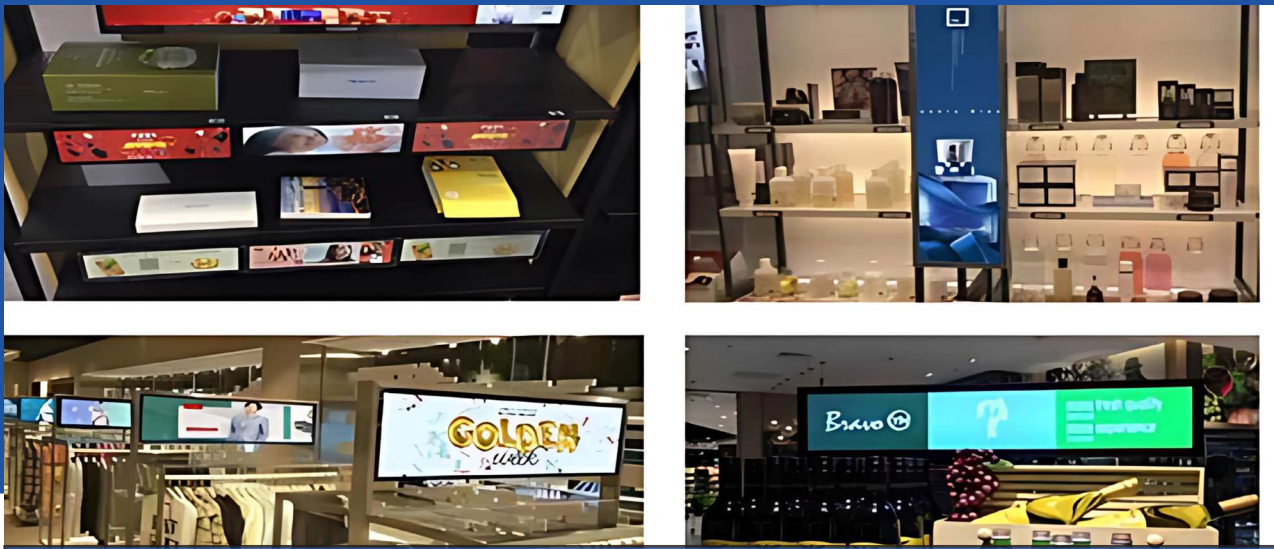


Specifications

Model	1	2	3	4	5
Panel Model	43"	49"	55"	65"	75"
Max Resolution	1920x1080	1920x1080	1920x1080	3840x2160	3840x2160
Aspect Ratio	16:09	16:09	16:09	16:09	16:09
Pixel Pitch	0.4903x0.4903	0.27963x0.27963	0.63x0.63	0.372x0.372	0.429x0.429
Viewing Angle	89/89/89/89	89/89/89/89	89/89/89/89	89/89/89/89	89/89/89/89
Contrast Ratio	1200:1	1400:1	1400:1	14000:1	1200:1
Brightness (cd/m²)	500	500	500	500	500
Display Area (mm)	94.184x529.416	1073.78x604	1209.6x680.4	1428.48x803.52	1649.66x12927.936
Panel Size (mm)	9673x563.8x29	1096.2x632.5x29	1244.6x720.9x27	14593.2x830x16	1675.2x953.6x11.9

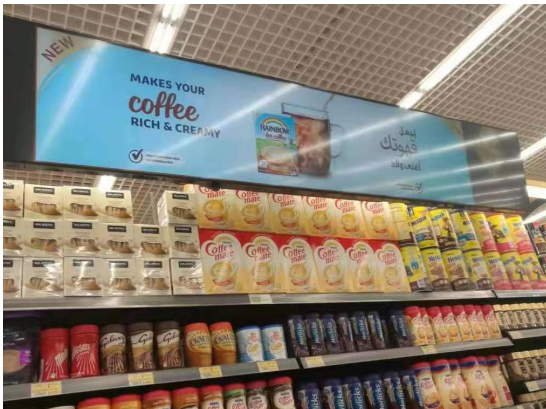


Indoor LCD Stretch Screens, Single Or Double Sided



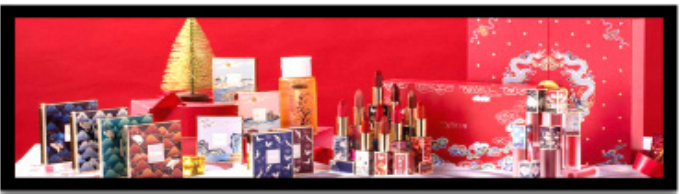
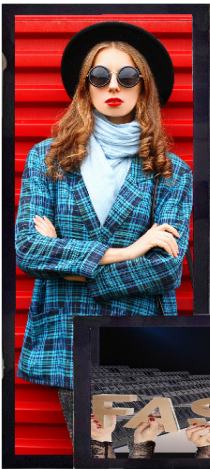
Unique Stretch LCD Screens with Built in Media Player, Vertical or Horizontal. Medium to High Brightness

- Stretch LCD Screens that come in many sizes, configurations and features to accommodate a wide range of digital signage projects
- Ultra-narrow Bezel, Extra-Long Stretch Screen, Covered with Anti-Glare and Impact-Resistant Tempered Glass
- Horizontal & Vertical Screens, easily switchable
- Single & Double-Sided Screens Available
- Brightness of 500 Nits, 700 Nits, 1000 Nits & 1500 Nits Available
- Available Sizes: 24", 37", 38"



Specifications

Model	Single/Double Sided	Single/Double Sided	Single/Double Sided
Panel Model	24"	36.8"	37.6"
Max Resolution	1920x3660	1920x360	1920x540
Active Display Area	597x111mm	919.29x172mm	920x259mm
Panel Type	LED Backlight	LED Backlight	LED Backlight
Support Colors	16.7m	16.7m	16.7m
Contrast Ratio	1000:1	1000:1	1000:1
Brightness (cd/m²)	250-500	250-500	250-500
Viewing Angle	R/L/U/D 89/89/89/89	R/L/U/D 89/89/89/89	R/L/U/D 89/89/89/89
Response Time	<8ms	<8ms	<8ms
Field Rate	9673x563.8x29	1096.2x632.5x29	1244.6x720.9x27
Theory Lifetime	94.184x529.416	1073.78x604	1209.6x680.4
Power Consumption (Kw/h)	9673x563.8x29	1096.2x632.5x29	1244.6x720.9x27



Indoor LCD Portable Training Unit



Portable LCD Display, Free Rotation & Tilting, Automatic Height Adjustment, 10 Hr Built-in Battery

- 27" & 32" Full HD LCS Screen, 500 nits brightness, IPS Full-viewing angle readable
- Anti-glare AG Glass
- Capacitive touchscreen
- Full adjustable screen - supports rotation and tilt for flexible viewing
- Automatic lifting stand with on-touch control and 44 cm adjustable height
- Built-in lithium battery lasts for up to 10 hours
- Built-in hidden silent wheels - easy to move to any position
- Optional Android and CMS, supports BT5.0, Wi-Fi and LAN, with USB, HDMI



Specifications

Panel

LCD Panel Type	27inch	32inch
Resolution	1920*1080	1920*1080
Backlight	LED	LED
Brightness	250nits	300nits
Contrast Ratio	3000:1	1200:1
Color Depth	8 bits	8 bits
Response Time	8 ms (typ)	

Viewing Angle	178° / 178°
Light Life Time	50,000 hrs (typ.)

Touch	10points PCAP touch
-------	---------------------

POWER	Internal
Power Supply	13.5v 6A
Adaptor output	100 V ~ 240 V, 50 Hz / 60 Hz
Rated Voltage	10000mAh battery capability
Rechargeable Battery	<35W
Power Consumption	<56W

USER INTERFACE	English / Multi Language option
----------------	---------------------------------

I/O PORTS	
HDMI	YES
Audio	N/A

ENVIRONMENT	
Operating Temperature	-20° C ~ 60° C
Storage Temperature	-10° C ~ 60° C
Humidity	10% ~ 80% RH Non-condensing

INTERNAL PLAYER	
Processor	Cortex-A73+ Quad-core Cortex-A53 2.0Ghz
Main memory interface	4GB/8GB DDR4
Graphics	ARM Mali G72 MP3 700MHz
Storage (FDM)	eMMC 64GB/128GB(2GB occupied by o/s)
Multimedia	H.264 encoder/decoder, MPEG-1/2/4, H.263,H.264 MVC, AVS, VC-1,
VP8/6, RV	
IO ports	USB 2.0 x4, micro SD slot x1
Operating system	Android 13
Network	Wlan 802.11 b/g/n (2.4G/5G) ,RJ45
Bluetooth	Bluetooth 4.2

ENVIRONMENT	
Storage Temp	(-20 -- 65 degree)
Working Temp	(0 -- 50 degree)
Storage/Working Humidity	(10 -- 90 %)

CERTIFICATION	CE, FCC&Rohs
---------------	--------------

MECHANICAL SPECS		
Orientation	Portrait/Landscape	Portrait/Landscape White
Cabinet Color	White	White
Dimension (LxHxD)	1290X614mm	1330X715mm
CTN Dimension (LxHxD)	1200x240x470mm	1320x240x510mm
Weight (N.W)	17KG	19KG
Weight (G.W)	21KG	23KG



Semi Outdoor and Full Sun LCD TV's with webOS



Semi Outdoor and Full Sun, Outdoor High Brightness TV's with webOS

- 700Nit Semi Outdoor TV
 - Size: 55", 65", 75"
 - LG webOS
 - QLED 4K, UHD, HDR, IP55
 - Advanced quantum dot Technology
 - Immersive Viewing Experience
 - Local Dimming & Mini LED Technology - Intelligent
- Full Sun, Outdoor TV
 - Size: 65", 75"
 - 2500/4000 Nit High Brightness
 - Local Dimming & Mini LED Technology - Intelligent backlighting system
 - IP55
 - webOS



Specifications

Semi Outdoor

LCD			
Size	55"	65"	75"
Panel Type	VA	VA	VA
Active Display Area (HxVmm)	1209.6 x 680.4	1428 x 803	1650 x 928
Resolution	3840 x 2160	3840 x 2160	3840 x 2160
Aspect Ratio	16:9	16:9	16:9
Refresh Rate(Hz)	60 Hz	60 Hz	60 Hz
Response Time (typ.)	6.5 ms	6.5 ms	6.5 ms
NTSC	72%	72%	72%
Viewing Angle	178°/178°	178°/178°	178°/178°
Backlight Configuration	LED	LED	LED
Operation Life (hours)	50,000	50,000	50,000
Brightness(nits)	700 (typical) / 1000 (peak) Nits		
Smart Platform	LG WebOS		
Wifi	802.11a/b/g/n/ac		
Bluetooth	5.0		
Mechanical			
TV Dimensions (WxHxD mm)	1264 x 735 x 78	1483 x 858 x 78	1705 x 983 x 78
Packaging Dimensions (WxHxD mm)	1353 x 802 x 218	1572 x 931 x 218	1795 x 1056 x 218
Net Weight (kg)	22	29	36
Gross Weight (kg)	28	37	44
Power			
AC Input	100~240VAC±10% , 50/60 Hz		
Standby Consumption	<0.5W		
Power Consumption	260	370	450
Environment			
Waterproof Rating	IP55		
Operating Temp. Range	0°C to 40°C		
Non-operating Temp.	-20°C to 50°C		
Operating Humidity	20-80% RH, non-condensing		
Operating Altitude	< 2000m		

Full Sun Outdoor

LCD		
Size	65"	75"
Panel Type	IPS	IPS
Active Display Area (HxVmm)	1428 x 803	1650 x 928
Resolution	3840 x 2160	3840 x 2160
Aspect Ratio	16:9	16:9
Refresh Rate(Hz)	60 Hz	60 Hz
Response Time (typ.)	6.5 ms	6.5 ms
NTSC	72%	72%
Viewing Angle	178°/178°	178°/178°
Backlight Configuration	LED	LED
Operation Life (hours)	50,000	50,000
Brightness(nits)	2500 (typical) / 4000 (peak) Nits	
Smart Platform	LG WebOS	
Wifi	802.11a/b/g/n/ac	
Bluetooth	5	
Mechanical		
Enclosure Material	Aluminum	
Finishing	Fine Grain Powder Coating	
Colour	Black (Ral 9005)	
Glass	AG Coating Tempered Glass Back Painted Black C	
TV Dimensions (WxHxD mm)	1478 x 852.8 x 107.7	1700 x 978 x 107.7
Net Weight (kg)	60	77
Power		
AC Input	100~240VAC±10% , 50/60 Hz	
Standby Consumption	<0.5W	
Power Consumption	530	575
Environment		
Waterproof Rating	IP55	
Operating Temp. Range	<30°C to 50°C	
Non-operating Temp.	<30°C to 50°C	
Operating Humidity	10-90% RH, non-condensing	
Operating Altitude	< 2000m	

Outdoor High Brightness Display



Outdoor High Brightness Displays, IP66 Rating

- 4500 nits brightness and high contrast ratio
- Size: 32", 43", 55", 65", 75"
- IP66 Rating
- AG-coating Tempered Glass - Reflectance Coefficient (R) <0.01
- Zero Air Gap
- Aluminum 6063 with Thermal Conductivity
- High Brightness - Automatically adjusts brightness in any light
- Wide Operating Temperature Range



Specifications

LCD Display					
Size	32"	43"	55"	65"	75"
Active Display Area (H x V mm)	698.4 x 392.85	942.5 x 531	1209.6 x 680.4	1430 x 805	1650.5 x 929
Resolution	1920 x 1080	1920 x 1080	1920 x 1080	3840 x 2160	3840 x 2160
Brightness(nits)	2500 nits	2500 nits	2500 nits	2500 nits	2500 nits
Aspect Ratio	16 : 9	16 : 9	16 : 9	16 : 9	16 : 9
Backlight Adjustment	Automatic (Ambient Light Sensor)	Automatic (Ambient Light Sensor)	Automatic (Ambient Light Sensor)	Automatic (Ambient Light Sensor)	Automatic (Ambient Light Sensor)
Viewing Angle	178°/178°	178°/178°	178°/178°	178°/178°	178°/178°
Backlight Configuration	Direct LED	Direct LED	Direct LED	Direct LED	Direct LED
Operation Life (hours)	50,000	50,000	50,000	50,000	50,000
Mechanical					
Enclosure Material	Aluminum	Aluminum	Aluminum	Aluminum	Aluminum
Finishing	Fine Grain Powder Coating	Fine Grain Powder Coating	Fine Grain Powder Coating	Fine Grain Powder Coating	Fine Grain Powder Coating
Colour	Black (Ral 9005)	Black (Ral 9005)	Black (Ral 9005)	Black (Ral 9005)	Black (Ral 9005)
Glass	AG Coating Tempered Glass, Back Painted Pantone Black C	AG Coating Tempered Glass, Back Painted Pantone Black C	AG Coating Tempered Glass, Back Painted Pantone Black C	AG Coating Tempered Glass, Back Painted Pantone Black C	AG Coating Tempered Glass, Back Painted Pantone Black C
Unit Dimension (w x h x d mm)	469.5 x 775 x 107.8 mm	1017.5 x 606 x 107 mm	1286 x 757 x 107 mm	900 x 1524 x 107 mm	1024 x 1745.5 x 107 mm
Net Weight	20kg	32kg	50kg	63kg	80kg
VESA (mm)	380x380mm	540 x 400mm	500 x 500mm	600 x 620mm	700 x 700mm
Environment					
IP Rating	IP66	IP66	IP66	IP66	IP66
Operating Environment	Fully Outdoor	Fully Outdoor	Fully Outdoor	Fully Outdoor	Fully Outdoor
Operating Temperature	-30°C~50°C	-30°C~50°C	-30°C~50°C	-30°C~50°C	-30°C~50°C
Operating Humidity	5%~98%	5%~98%	5%~98%	5%~98%	5%~98%
Operating Altitude	≤ 2000m	≤ 2000m	≤ 2000m	≤ 2000m	≤ 2000m
Power					
AC input	110 VAC / 220 VAC±10% , 50/60 Hz	110 VAC / 220 VAC , 50/60 Hz	110 VAC / 220 VAC , 50/60 Hz	110 VAC / 220 VAC±10% , 50/60 Hz	110 VAC / 220 VAC±10% , 50/60 Hz
Power Consumption	180 W	210 w	250 w	460w	600w
Media					
Interface	HDMI in x 1	HDMI in x 1	HDMI in x 1	HDMI in x 1, 480i, 480p, 720p, 1080i, 1080p, 2160p	HDMI in x 1, 480i, 480p, 720p, 1080i, 1080p, 2160p

Outdoor Digital Parking Display



32" High Brightness LCD Outdoor Digital Display

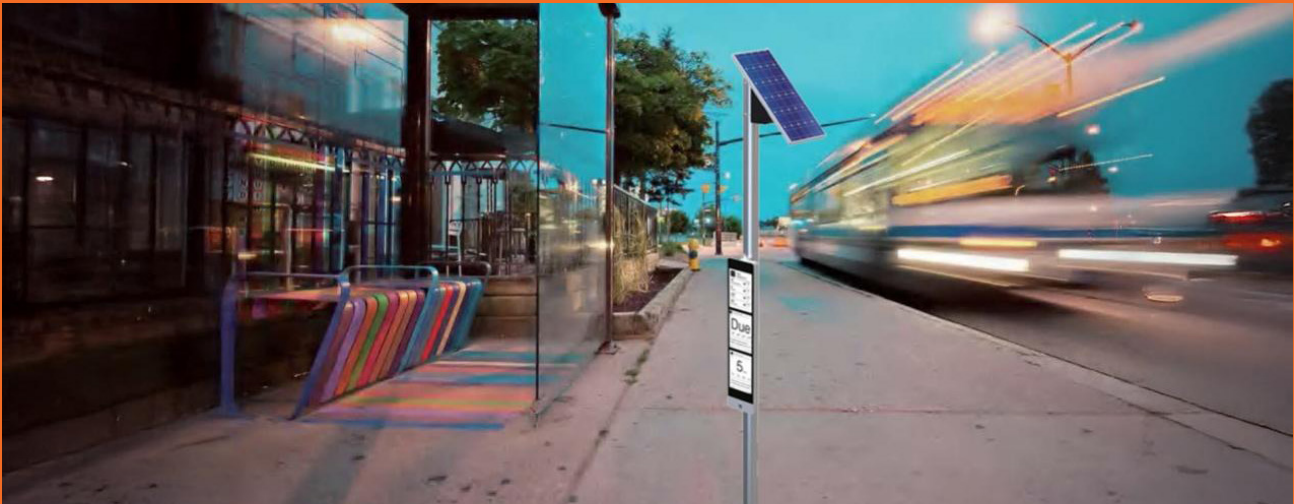
- Size: 32"
- High Brightness
- IK10 Glass Protection
- -22 Degrees F to 122 Degrees F



Specifications

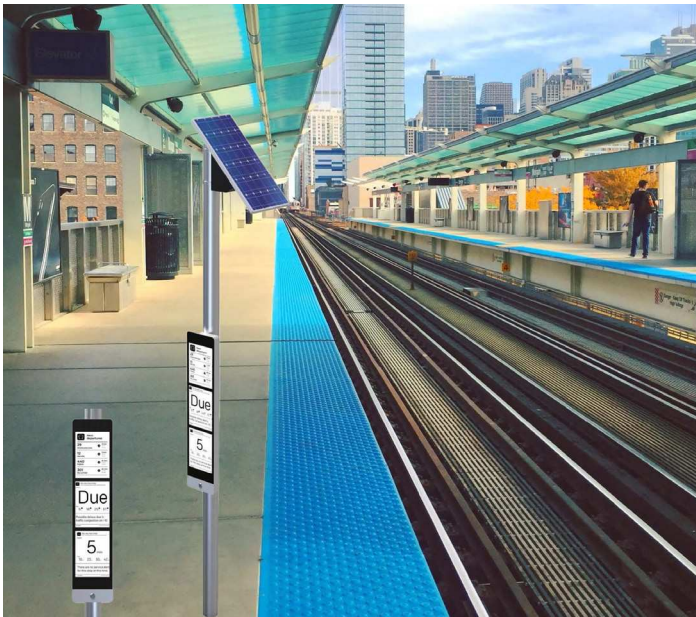
LCD Display	
Size	32
Active Display Area (HxVmm)	700 x 394.5
Resolution	1920 x 1080
Aspect Ratio	16:9
Backlight Adjustment	Automatic (Ambient Light Sensor)
Operation Life (hours)	50,000
Viewing Angle	178°/178°
Brightness(nits)	2000 (typical) / 3000 (peak) nits
Backlight Type	Full Array Local Dimming LED
Mechanical	
Enclosure Material	Aluminum
Finishing	Fine Grain Powder Coating
Colour	Black (Ral 9005)
Glass	AG Coating Tempered Glass, Back Painted Pantone Black C
Screen Dimensions (WxHxD mm)	440.5 x 746 x 113 mm
Net Weight	18 kg
Power	
AC Input	100~240VAC±10% , 50/60 Hz
Power Consumption	120 w
Environment	
IP Rating	IP66
Operating Environment	Fully Outdoor
Operating Temperature	-30°C~50°C
Operating Humidity	5%~98%
Operating Altitude	< 2000m
Media	
HDMI Input	HDMI (x1), 480i, 480p, 720p, 1080i, 1080p
Analog Audio Output	3.5mm Headphone Jack (x1)

Outdoor Bus Timetable Displays



e-paper displays designed for easy installation to existing bus stop poles or shelter walls

- IP66
- Fully-Independent
- Wireless & Solar-powered
- Aluminum Enclosure with toughened front glass
- Easy installation
- Available Options: illumination, interactive



Specifications

Panel	
Panel Size (inch)	13.3
Active Display Area (h x w mm)	202.8 (H) x 270.4 (V)
Resolution (pixel)	1200(H) x 1600(V)
Aspect Ratio	3 : 4
Brightness	Reflective Mode
Viewing Angle (H/V)	Nearly 180 degrees
Number of Gray	16 Gray Level (monochrome)
Backlight Configuration	NA
Operational Life (Refresh times)	At least 1 million
Battery	
Type	Lithium battery
Charging temperature range	0°C~45°C
Discharge temperature range	0°C~50°C
Nominal Capacity	5800mAh
Rated voltage	12V
Charging time	4hours
Mechanical	
Enclosure Material	Aluminum
Finishing	Fine Grain Powder Coating
Colour	White(RaI 9003)
Glass Type	Tempered glass
Unit Dimension (w x h x d mm)	264.6 x 940.6 x 30
Bezel width (mm)	29.8
Weight (kg)	2.7
Environment	
IP Rating	IP66
Operating Environment	Outdoor
Operating Temperature	-15°C ~ +50°C
Operating Humidity	5%-98%
Operating Altitude	< 2000
Media	
OS	Android 5.1
Connectivity	BT (Default) Wifi/4G (Option)
Power Adaptor	
Input	100-200VAC , 50/60 Hz
Output	12.6V, 1A

Indoor Full Color A-Frame Displays



32" Movable Indoor Full Color A-Frame Displays

- E Ink Spectra 6 Colors
- Red/Yellow/Blue/White/Green/Black
- High Resolution (1440 x 2560)
- Ultra-low Power Consumption
- Wide Viewing Angle
- Lightweight & Durable
- Clear Text & Image Display



Specifications

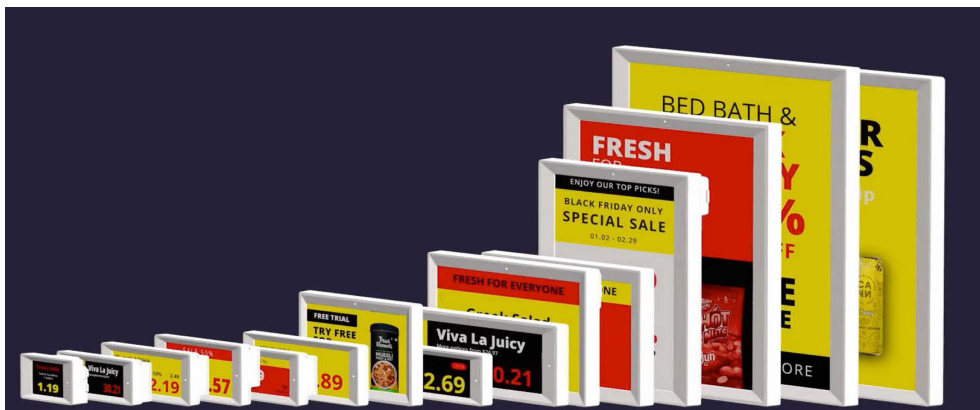
Panel	
Panel Size (inch)	31.5
Active Display Area (h x w mm)	391.68 (H) x 696.32 (V)
Resolution (pixel)	1440(H) x 2560(V)
Aspect Ratio	9 : 16
Brightness	Reflective Mode
Viewing Angle (H/V)	Nearly 180 degrees
FPL	E Ink Spectra 6
Backlight Configuration	NA
Operational Life (Refresh times)	At least 1 million
Battery	
Type	Lithium battery
Charging temperature range	0°C~45°C
Discharge temperature range	0°C~50°C
Nominal Capacity	5800mAH
Rated voltage	12V
Charging time	4hours
Mechanical	
Enclosure Material	Stainless Steel + Aluminum
Finishing	Fine Grain Powder Coating
Colour	White
Glass Type	Tempered glass
Environment	
Operating Environment	Outdoor
Operating Temperature	-0°C ~ +50°C
Operating Humidity	10%-80%
Operating Altitude	< 2000
Media	
OS	Linux
Connectivity	Wifi / BT
Power Adaptor	
Input	100-200VAC , 50/60 Hz
Output	12.6V, 1A

Electronic Shelf Labels (ESL's)



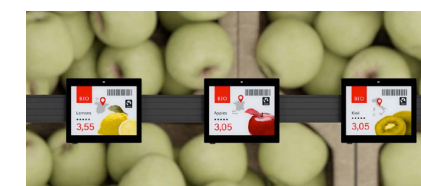
Ultra-responsive labels with long battery life, perfect for high-demand environments

- E Ink 4 Color, 6 Color, Full Color, Freezer & Outdoor options available
- Various Sizes Available - (4 Color: 1.6" (horizontal/vertical), 2.2", 2.6", 2.9", 3.5", 4.2", 4.3", 5.8", 6.1", 7.5", 9.7", 11.6", 12.2") (6 Color: 7.3", 8.2", 13.3", 31.5") (Freezer: 2.2", 2.6", 2.9", 3.5", 5.8") (Freezer Pro: 2.2", 2.6", 2.9", 3.5", 5.85") (Pro Extreme Outdoor: 2.9", 4.2", 7.5", 11.6") (ESL Dual: 11.6")
- High-definition visuals with advanced content management, suitable for any professional setting
- Unique, non-standard sizes that stand out, offering unmatched clarity and impact.
- Dual-view displays for synchronized content delivery, maximizing space efficiency



Revolutionize Your Retail Experience with ESL's

Elevate Customer Experience with Cutting-Edge ESL and Digital Signage Technology



LightBox by LiteScapes



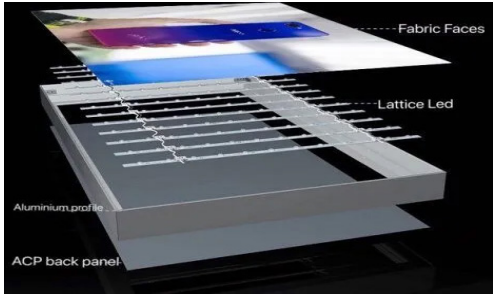
Static High Bright Lightboxes - Single or Double-Sided

Sizes: Custom Sizes Available

- Affordable Static High Bright Lightboxes with Fabric Printed Graphic, Single or Double-Sided
- Wall mounted, or Free Standing
- Aluminum Extruded Frame
- Custom Sizes Available
- Suspended and recessed fabric light box with application-specific dynamic LED illumination, provide the flexibility, stuffing aesthetics and high quality in customized frame

- Various frame options: Tension Frame Light box - outdoor. Frame-less Frame, aluminum profile, mag-frame & snap frame

Frame-less Frame - ACP Back Panel



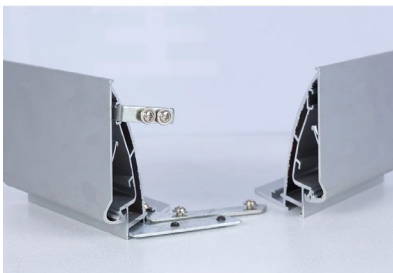
Frame-less Frame - Aluminum Profile



Magframe Design - Double Sided



Frame-less Frame - ACP Back Panel



Magframe - Acrylic Front Panel - Magnetize easy open design



Tension Frame - lightweight & Easy to Assemble



Available Products & Frame Specs

Double -Sided Magnetic LED Light Box

Model	Frame size (mm)	Image size (mm)	Visual size (mm)	LED Qty	Brightness (Lux)	Wattage	Power supply
DBCX33 -A0	1249x901x33	1189x841	1129x821	114x2	3000-3500	50W	DC12V,5A
DBCX33 -A1	901x654x33	841x594	821x574	78x2	3500-4000	35W	DC12V,5A
DBCX33 -A2	654x480x33	594x420	574x400	57x2	4500-5000	25W	DC12V,3A
DBCX33 -B1	1060x760x33	1000x700	980x680	93x2	3000-3500	41W	DC12V,5A
DBCX33 -B2	760x560x33	700x500	680x480	63x2	3500-4000	28W	DC12V,3A



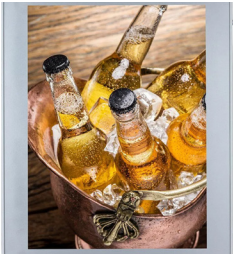
Magframe LED Light Box

Model	Frame size (mm)	Image size (mm)	Visual size (mm)	LED Qty	Brightness (Lux)	Wattage	Power supply
CX18 -A0	1229 x881 x18	1189 x841	1129 x821	114 x2	3000-3500	50W	DC 12 V,5A
CX18 -A1	881 x634 x18	841 x594	821 x574	78x2	3500-4000	35W	DC 12 V,5A
CX18 -A2	634x460x18	594x420	574x400	57x2	4500-5000	25W	DC 12 V,3A
CX18 -B1	1040 x740x18	1000 x700	980x680	93x2	3000-3500	41 W	DC 12 V,5A
CX18 -B2	740x540x18	700x500	680x480	63x2	3500-4000	28W	DC 12 V,3A



Outdoor LED Light Box

Model	Frame size (mm)	Image size (mm)	Visual size (mm)	LED Qty	Brightness (Lux)	Wattage	Power supply
FS47-A0	1299 x951 x47	1189 x841	1129 x821	114 x2	3000-3500	50W	DC 12 V,5A
FS47-A1	951 x704x47	841 x594	821 x574	78x2	3500-4000	35W	DC 12 V,5A
FS47-A2	704x530x47	594x420	574x400	57x2	4500-5000	25W	DC 12 V,3A
FS47-B1	1100 x810 x47	1000 x700	980x680	93x2	3000-3500	41 W	DC 12 V,5A
FS47-B2	810 x610 x47	700x500	680x480	63x2	3500-4000	28W	DC 12 V,3A



Snap Frame LED Light Box

Model	Frame size (mm)	Image size (mm)	Visual size (mm)	LED Qty	Brightness (Lux)	Wattage	Power supply
FG 18 -A0	1213 x865 x18	1189 x841	1129 x821	82x2	3000 -3500	50W	DC 12 V,5A
FG 18 -A1	865x618 x18	841 x594	821 x574	60x2	3500 -4000	35W	DC 12 V,5A
FG 18 -A2	618 x444x18	594x420	574x400	42x2	4500 -5000	25W	DC 12 V,3A
FG 18 -B1	1024 x724 x18	1000 x700	980x680	72x2	3000 -3500	41 W	DC 12 V,5A
FG 18 -B2	724 x524 x18	700 x500	680x480	51 x2	3500 -4000	28W	DC 12 V,3A



Interactive 138" LED SmartScreen - Foldable



1.5mm Pitch LED Screen, 1920 X 1080, Built in Android Control System

- Display comes with stand and folds up for portability
- Size: 3064mm Wide X 2023mm High (121" Wide X 80" High)
- Folded Size: 1970mm Wide X 2023mm High X 780mm Deep (78" Wide X 80" High X 31" Deep)
- Weight: 265kg (584lbs)
- Remote control with interfaces adapting USB, HDMI and etc.
- Media Formats Supported: MPEG1, MPEG2, MPEG4, H.264, WMV, MKV, TS, FLV and other mainstream video formats; Support MP3 and other audio formats; Support JPG, JPEG, BMP, PNG, and GIF image formats

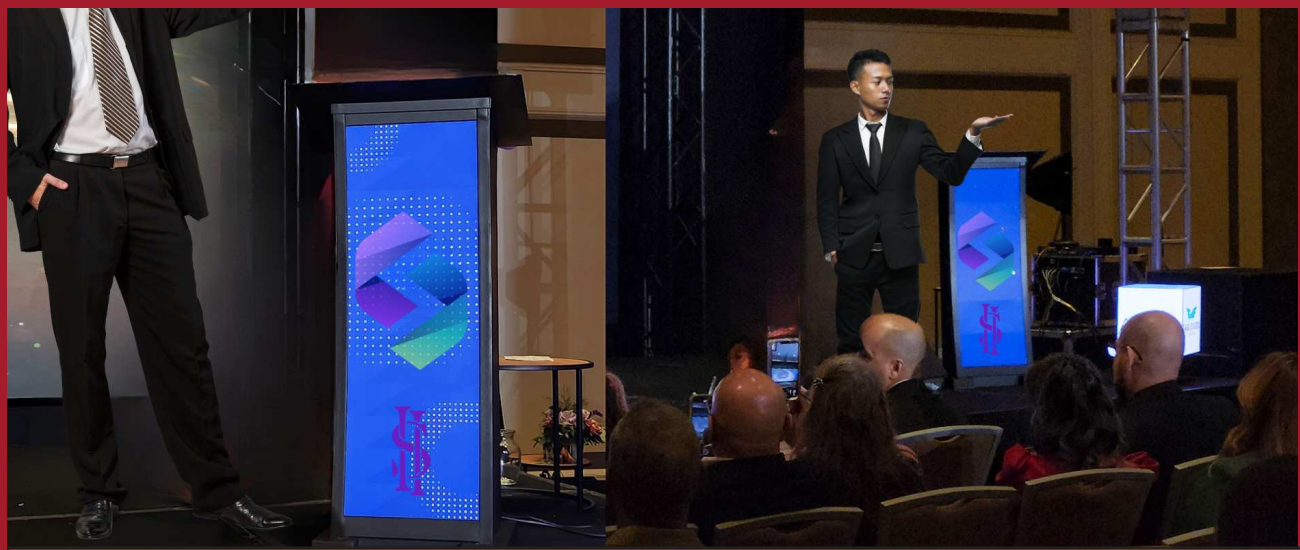


Specifications

Display Parameter	
Size	110 inch
Pixel Pitch	1.2mm
Ratio	16:9
Resolution	1920x1080
Module Size (width*height)	152.5x343mm
Cabinet Size (width*height*thickness)	610x343x31mm
Cabinet QTY	4x4
Overall Dimension (width*height)	2446x1430mm
Display area (width*height)	2440x1372mm
Unfolded Terminal Size (width*height*thickness)	2453x2318x760mm
Folded Terminal Size (width*height*thickness)	1360x1817x760mm
Terminal Height	1817-2317mm Adjustable
Weight	210kg
Suggested Viewing Distance	≥2m
Maintenance	Front & Rear Maintenance
Installation Method	Foot mounting
Environmental Parameter	
Ambient Temperature	-10°C-40°C
Maintenance	10%-80%RH No condensation

System Parameter	
Operating System	Android 9.0
CPU	2 x Cortex-A72 + cortex-A53, 2.0GHz
RAM	4GB
Storage	32GB
Media Format	Support MPEG1, MPEG2, MPEG4, H.264, WMV, MKV, TS, FLV and other mainstream Video formats; Support MP3 and other audio formats; Support JPG, JPEG, BMP, PNG, and GIF image formats
Optical Parameter	
Brightness	550nit
Refresh Rate	3840Hz
Gray Scale	14bit
Contrast	6500:1
CCT	6500-9300K
Viewing Angle	Horizontal 170°, Vertical 170°
LED Lifespan	≥100,000h
Electrical Parameter	
Input Voltage	100-240VAC 50/60Hz
Average Consumption	0.44KW
Maximum Consumption	1.31KW

Indoor LED Podium



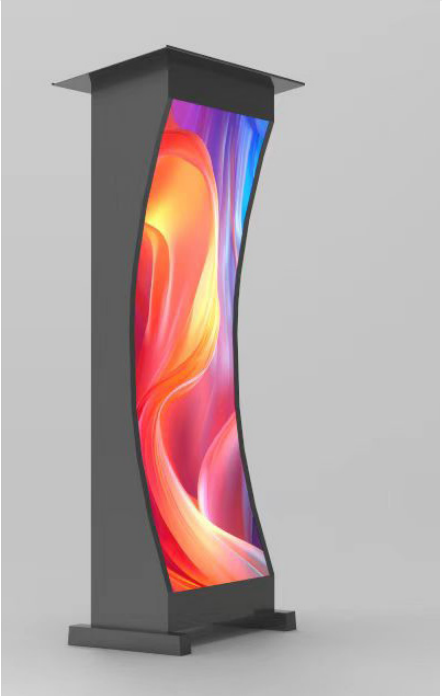
All-in-one Plug-and-play System, Ultra High Brightness

- Pixel Pitch -1.89mm (Display Size 480*960mm), 2.5mm (Display Size 480*960mm), 1.86mm (Display Size 320*960mm), 2.5mm (Display Size 320*960mm)
- SMD 1212
- 600 Nit Brightness / adustable brightness 0-100 levels
- IP30 Rating
- Front Maintenance
- Serves as a critical visual aid for presenters, seamlessly integrating with display areas to amplify speech impact and brand visibility.
- Play Video or static images
- Ideal for presentations, conferences, lectures, brand launches, chorporate showrooms, commercial events, churches & schools



Specifications

Specification can be customized				
Pixel Pitch	1.57mm	1.88mm	2.0mm	2.5mm
LED Type	SMD 1212	SMD 1212	SMD 1212	SMD 1212
Pixel Density	406,406dot/m²	288,906dot/m²	250,000dot/m²	160,000dot/m²
Module size(W*H)	160x320mm	160x320mm	160x320mm	160x320mm
Module Resolution	102x204	86x172	80x160	64x128
Display Size(W*H)	320x960mm / 480x960 (W*H)			
Display Weight /PCS	30KG/PCS 30			
Product Size(W*H) (with base)	531x460x1150mm / 650x460x1150 (W*H)			
IP Rating	IP30	IP30	IP30	IP30
Brightness	600 cd/m² (adjustable)	600 cd/m² (adjustable)	600 cd/m² (adjustable)	600 cd/m² (adjustable)
Viewing Angle	160°/160°	160°/160°	160°/160°	160°/160°
View Distance	> 1.5m	> 1.8m	> 2m	> 2.5m
Gray scale	14bit	14bit	14bit	14bit
Max.Power Consumption	550W/m²	550W/m²	550W/m²	550W/m²
Ave.Power Consumption	160W/m²	160W/m²	160W/m²	160W/m²
Refresh Frequency	≥3840Hz	≥3840Hz	≥3840Hz	≥3840Hz
Environmental	indoor/semi-outdoor	indoor/semi-outdoor	indoor/semi-outdoor	indoor/semi-outdoor
Brightness Adjustment	0-100 levels adjustable	0-100 levels adjustable	0-100 levels adjustable	0-100 levels adjustable
Operation Power	AC100-240V 50/60Hz	AC100-240V 50/60Hz	AC100-240V 50/60Hz	AC100-240V 50/60Hz



LED Showcase Counter Cube



All-in-One Plug-and-play System, Customizable 360 degree visuals, control wirelessly

- Standard four-sided counter
- Various sizes - 320*480/320*640/320*960mm (WxH)
- Wide Viewing Angle - customizable 360 Visuals to display what matters most
- Pixel Pitch available: 1.25mm, 1.53mm, 1.86mm, 2mm, 2.5mm
- Adapt seamlessly to different counter spaces
- User friendly design with instant setup functionality
- Easy to control via Wifi; supports both computer and mobile
- Ideal for retail displays, pop-up shops, trade shows, lobbies and showrooms



Specifications

Specification can be customized

ModuleNumber	PH1.25	PH1.53	PH1.86	PH2	PH2.5
PixelPitch	1.25mm	1.53mm	1.86mm	2mm	2.5mm
LedArrangement	GOB				
ModuleDimensions	320x160dots				
ModuleResolution	256x128dots	208x104dots	172x86dots	160x80dots	128x64dots
Module scan	1/64s	1/52s	1/43s	1/40s	1/32s
Display size	320*480mm/320*640mm/320*960mm(WxH)				
Outersize	380*1125mm/ 380*1195mm/ 380*1285mm/ 380*1335mmwith acrylic box				
Material	Iron				
CabinetWeight	25kg/28kg/32kg per screen				
Brightness	>600nits				
MaxPowerConsumption	440w/m²				
AvePowerConsumption	145w/m²				
ViewingAngle	160°(W)/160°(H)				
OperatingPowersource	110-240VAC50-60Hz				
OperatingTemperature	-20°C~+50°C				
RefreshRate	3840Hz				
IPRating	IP43				
Video Interface	HDMI*2(1 input and 10output),UsB 2.0*1				
Audio Interface	RJ45,WIFI,AP Local Network,4G Network(Optional)				
Control interface	Composite,S video,Component,HDMISDI HD,VGA,DV				
Installation/Maintenance	Standing(Stacking,Hanging,Wall Mounting(Optional))				
Certificate	MET,ETL,FCC,CE,RoHS				

LED Desk/Podium Complete Display



Ultra High Brightness, sleek & modern design with customizable content and GOB Protection

- Ultra-High Brightness Display - Ensures crystal-clear visibility even in bright environments.
- Sleek & Modern Design - Enhances any stage, podium, front desk reception area or presentation setup.
- All-in-One Solution - Built-in media player for seamless content display.
- Customizable Content - Easily showcase brand imaging, announcements, scriptures, lyrics or presentations.
- Wireless & Remote Control - Update content effortlessly from anywhere.
- Durable & Long-Lasting - Designed for high-usage environment with energy-efficient technology.
- Plug & Play Setup - Quick and easy installation with minimal maintenance.
- Versatile Applications - Ideal for any office space, churches, conference halls, corporate events and much more.



Specifications

Best Viewing Distance(m)	≥1.25	≥1.57	≥1.86
Brightness	600nits	600nits	600nits
Refresh Rate	3,840Hz	3,840Hz	3,840Hz
Grey Scale	16bit	16bit	16bit
Max./Avg.Power Consumption	Max. 600w/pcs, Avg.200w/pcs		
Viewing Angle	160°(H)/160°(V)		
Working Voltage (input)	AC110-240V@50/60Hz		
Operating Temperature	-20~50°C,10%-90RH		
IP Rating	IP30		
Maintenance	Front Maintain		
Operate System	Novastar		

Model	P2(GOB)	P2.5(GOB)
Pixel Pitch(mm)	2	2.5
Pixel Density	250,000	160,000
Module Size(WxHxD)	320x160x15mm	
LED Type	SMD1515	SMD1515
Module Resolution(dots)	160x 80	128x 64
Module Arrangement (per cabinet)	6x6pcs	
Display Size(WxH)	1920x960mm	
Cabinet Size(WxHxD)	1280x1135x500mm (with wheels)	
Package Size(WxHxD)	1340x1330x720mm	
Cabinet Weight	97kg/pc	
Cabinet Resolution(dots)	960x48	768x384
Best Viewing Distance(m)	0 ≥2	≥2.5
Brightness	600nits	600nits
Refresh Rate	3,840Hz	3,840Hz
Grey Scale	16bit	16bit
Max./Avg.Power Consumption	Max. 600w/pcs, Avg.200w/pcs	
Viewing Angle	160°(H)/160°(V)	
Working Voltage (input)	AC110-240V@50/60Hz	
Operating Temperature	-20~50°C,10%-90RH	
IP Rating	IP30	
Maintenance	Front Maintain	
Operate System	Novastar	



Indoor Kiosks



Ultra High-brightness, Single & Double Sided, P Cap
Touch & Non-Touch
Sizes: 55", 65", 75"

- Freestanding digital signage
- Built-in Wi-Fi
- Touch Screen and Non-Touch
- Covered with explosion-proof glass
- Ultra-thin Design with 105mm Thickness
- Metal Case & Aluminum Frame



Specifications

Panel			
Size	55"	65"	75"
Max Resolution	1920 x 1080	3840 x 2160	3840 x 2160
Aspect Ratio	16:9	16:9	16:9
Pixel Pitch	0.63x0.63	0.372x0.372	0.429x0.429
Viewing Angle	89/89/89/89	89/89/89/89	89/89/89/89
Contrast Ratio	1400:1	1400:1	1200:1
Brightness (cc/m²)	500	500	500
Display Area (mm)	1209.6x680.4	1428.48x803.52	1649.66x927.936
Panel Size (mm)	1244.6x720.9x27	1459.2x830x16	1675.2x953.6x11.9

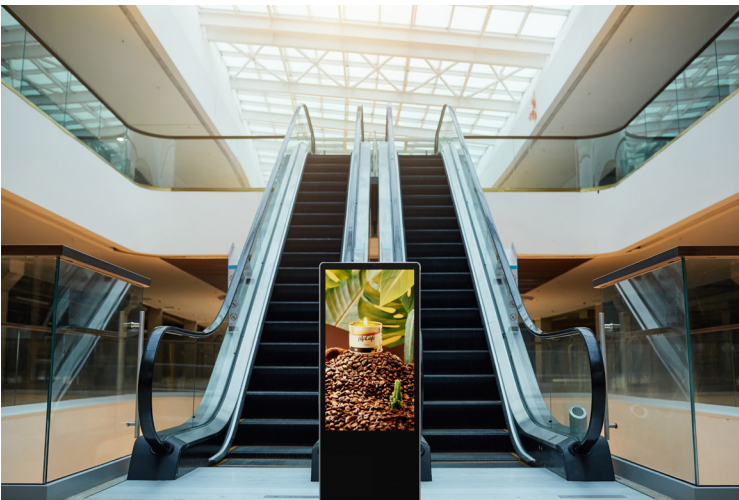


Table-top Kiosk Screen Display



L-Type Design, Built-In Android OS, 1080P High Resolution Display, Multi Interactive Touch & Non-Touch Sizes: 15.6"

- Freestanding digital signage
- Built-in Android OS
- Multi Interactive Touch Screen and Non-Touch
- Light-weight Design, easy to move anywhere
- Plug-and-play design for static images or videos
- Great for hotels, retail stores, restaurants and more



Specifications

Specification:			
	Model No.:	EZR15001502	EZR15001503
LCD Panel	Screen size	15.6inch	
	Resolution	1920*1080	
	Viewing Angle	89/89/89/89	
	Contract Ratio	1200:1	
	Brightness	250nits	
Option	Touch function	Non Touch Or PCAP Touch	
Hardware & OS	CPU	Quad Core	
	RAM	2GB	
	Storage	32GB	
	Android System	Android OS	
Network	WiFi	802.11b/g/n	
	Ethernet network	100M/1000M	
I/O Port	RJ45 WLAN	RJ45 x 1	
	USB port	USB 2.0 x 2	
Format	Video format	MPEG-1,MPEG-2,MPEG-4,H.263, H.264,VC1,RV etc.,Max 1920x1080p	
	Audio format	MP3/WMA	
	Image format	JPEG,BMP etc	
Others	Speaker	2*3W	
	OSD Menu	Multi-language OSD	
	Power supply	AC100v-240v	
	Power consumption	50W	
General information	Case Material	Metal case	
	Main Color	Black	
	Storage Temp	(-20 -- 65 degree)	
	Working Temp	(0 -- 55 degree)	
	Storage/Working Humidity	(10 -- 90%)	
	Certificates	CE, FCC&Rohs	



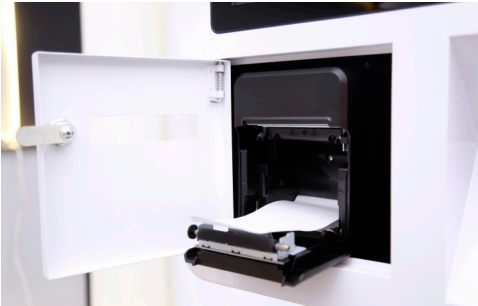
Self Service Kiosks



EZosk Interior Touchscreen Ordering kiosks (Various Sizes/Models)

Models: EZM15001508, EZM15001509, EZM15001510

- Innovative Self-Service kiosk for retail stores and quick-serve restaurants
- Multiple Screen Size Options - 15.6", 21.5", 32"
- Full Aluminum Enclosure with Heavy Duty Metal Stand
- Multiple Peripherals for Options
- LAN, Dual-Band WiFi, BT4.0
- True-flat capacitive touch screen
- 80mm thermal printer with auto-cutter(SNBC)
- 2D Barcode Scanner(Newland), Printer status indicator
- 2*3W Speaker
- NFC/RFID 13.56MHz, Dual Camera(5M pixels)



Specifications

EZM15001510

Android Kiosk Specs	EZM15001510
CPU	RK3568 4 x Cortex-A55 up to 2.0GHz; RK3588 4 x Cortex-A76 + 4 x Cortex-A55 up to 2.2GHz; RK3576 4 x Cortex-A72 + 4 x Cortex-A53 up to 2.2GHz
OS Support	Android 11.0(RK3568)/Android 12.0(RK3588)/Android 14.0(RK3576)
Resolution	32" 1920X1080
Touch	Multi-point Projected Capacitive Touch Screen
ROM / SSD	64GB Build-in eMMC(Max. 128GB)
RAM	DDR4 4GB On Board)Max. 8GB)
COM	1 x DB9(RS232)
USB	5 x USB 2.0
LAN	1 x Rj-45, Giga LAN
WiFi / BT	802.11a/b/g/n/ac, 802.11 ax optional/BT4.0
Video	1 x HDMI
Audio	1 x Line-out&Mic-in 2-in-1, 1 x Internal Speaker
EMV Payment Device Bracket	Support for various EMV Payment Device
Scanner	2D Barcode Scanner
Printer	3" Thermal Printer with Auto Cutter, 250 mm/sec (max.)
Status Indicator	RGB Color LED Indicator
Housing	Aluminum Die Casting Housing
Power	Input : 60W/12V
Color	White/Black
Optional	5MP Camera(USB); NFC/RFID Reader (USB); Proximity Sensor (USB); Fingerprint Reader (USB); Magnetic Stripe Reader (USB, Support 1 & 2 & 3 Track)

EZM15001508, EZM15001509

Android Kiosk Specs	EZM15001508 / EZM15001509
CPU	Rk3568 4 x Cortex-A55 up to 2.0GHz, RK3588 4 x ARM Cortex-A76 + 4 x ARM Cortex-A55 up to 2.2GHz
OS Support	Android 11.0(RK3568)/Android 12.0(RK3588)
Resolution	15.6" 1920 x 1080 / 21.5" 1920 x 1080
Touch Screen	Multi-point Capacitive Touch Screen
ROM / SSD	64GB Build-in eMMC(Max. 128GB)
RAM	DDR4 4GB On Board)Max. 8GB)
Serial	1 x COM
USB	5 x USB 2.0
LAN	1 x Rj-45, Giga LAN
WiFi	WiFi 802.11 ac/b/g/n & BT 4.2
Video	1 x HDMI
Audio	1 x Line-out, 1 x MIC In, 1 x Internal Speaker
EMV Payment Device Bracket	Support for various EMV Payment Device
Scanner	2D Barcode Scanner
Printer	3" Thermal Printer with Auto Cutter, 250 mm/sec (max.)
Status Indicator	RGB Color LED Indicator
Housing	Aluminum Die Casting Housing
Power	Input : 60W/12V
Color	Iron Gray
Optional	5MP Camera(USB); NFC/RFID Reader (USB); Proximity Sensor (USB); Fingerprint Reader (USB); Magnetic Stripe Reader (USB, Support 1 & 2 & 3 Track)

Car Charging Stations with LCD Display



Ezosk EV Charging Station Outdoor LCD Display

- Size: 32" Display
- IP66 Rating
- Open Charge Point Protocol
- Custom Enclosures
- IK10 Glass Protection



Specifications

Panel	
Size	32
Active Display Area (H x V mm)	698 x 392
Resolution	1920 x 1080
Aspect Ratio	16:9
Brightness	2000 (typical) / 3000 (peak) Nits
Backlight Adjustment	Automatic (Ambien Light Sensor)
Viewing Angle	178°/178°
Backlight Type	Full Array Local Dimming LED
Operation Life (hours)	50,000
Mechanical	
Dimensions (W x H x D)	700 x 2000 x 250 mm
Net Weight	120 kg
Enclosure Material	Galvanized Steel + Aluminum
Finishing	Zinc Powder Coating + Fine Grain Powder Coating
Colour	White (Ral 9003)
Glass	AG Coating Tempered Glass, Back Painted Pantone Black C
Power	
AC Input	100~240VAC±10% , 50/60 Hz
Power Consumption	120 w
Cellular Router	
Cellular Router	LTE/WCDMA(HSPA+)/EDGE/GPRS

Environment	
IP Rating	IP 66 (Display Unit)
Operating Environment	Fully Outdoor
Operating Temperature	-30°C~50°C
Operating Humidity	5%~98%
Operating Altitude	< 2000m
Media	
OS	Android 7.1
CPU	RK3288 1.8GHz
GPU	Mail-764
Memory	2GB (DDR3)
ROM	16GB (eMMC)
HDMI Input	HDMI (x1), 480i, 480p, 720p, 1080i, 1080p
USB Data Input	USB 2.0 (x1)
Analog Audio Output	3.5mm Headphone Jack (x1)
Ethernet	RJ-45 (x1)
WiFi	802.11/b/g/n
EV Charger	
Input Voltage	Three phase: 400VAC±10%
Output Rating	Type 2: 22kw-three phase 32A
User Interface	Emergency Stop / LED Indicator / RFID
Internet Interface	Ethernet, WIFI
OCPP	OCPP 1.6J

Indoor LCD Twin Screen Kiosks

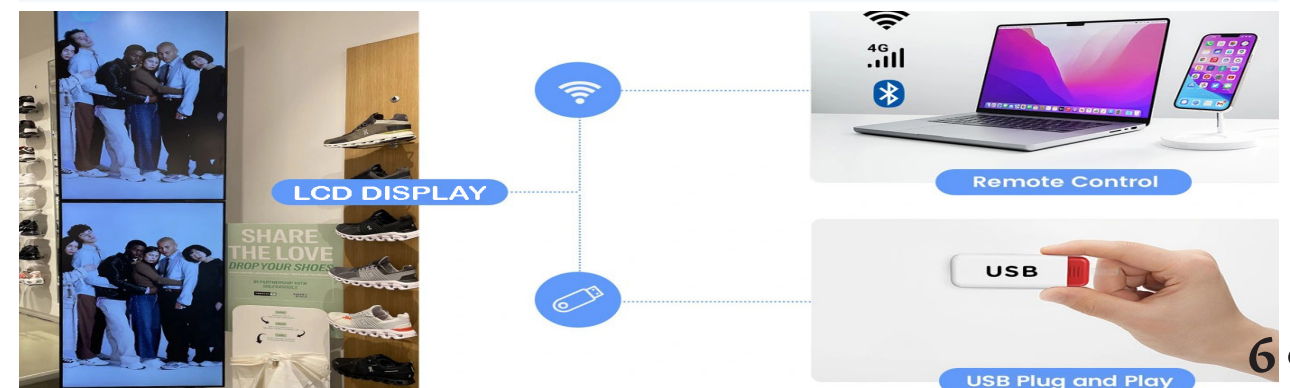
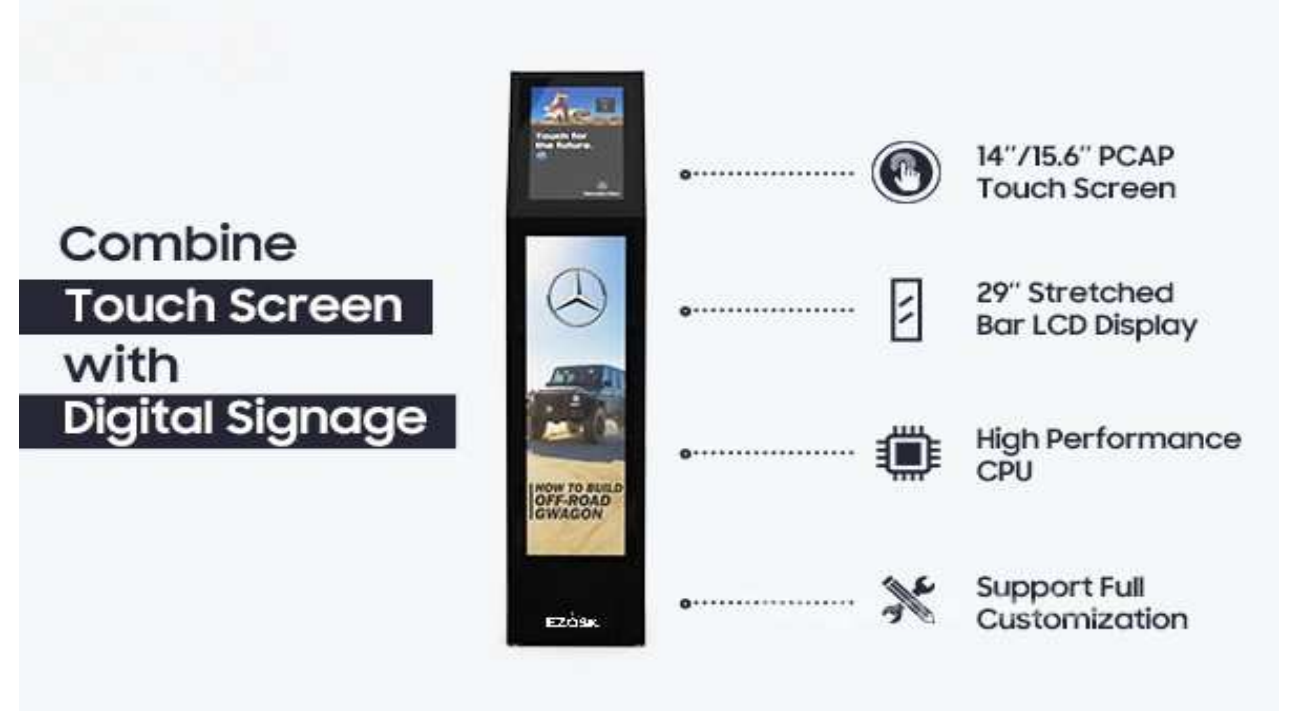


PCAP Touch Kiosk, Multi-Touch Screen & Stretch Display

- Stretched Bar Touch Screen Display (PCAP Touch Kiosk) LCD display comes with sizes 14" or 15.6" PCAP touch screen and 29" stretched bar display.
- Comines touch screen with digital signage for eye-catching design and a more interesting interactive experience.
- 1080P High Resolution Display - LCD display with high contrast ratios deliver the deepest black, resulting in crisp and clear images. Elevated brightness and high resolution for true color expression in a range of lighting conditions.
- Multi Interactive Touch Technology - LCD display that provides captive touch positioning technology. Multiple touch points and fast response provides great user experience.
- Built-in Android OS - the display supports USB drive plug and auto play.



Product Information



Outdoor High Brightness Touch or Non-Touch Kiosks



Single or Double-Sided Outdoor Touch or Non-Touch Display Kiosk

- Size: 55", 65", 75" Display
- IP66 Rating
- High Brightness, 2500/4000 Nits
- Viewable from very large angle and strong sunlight
- Strong Metal casing and tempered glass
- Embedded heater, fans & sensors keep the whole unit operating in any condition
- Brightness automatically adjusts to various sunlight and night modes



Specifications

Overview			
Size	55"	65"	75"
Resolution	1920 x 1080	3840 x 2160	3840 x 2160
Brightness(nits)	4000 (typical) / 6000 (peak) nits	2500 (typical) / 4000 (peak) nits	2500 (typical) / 4000 (peak) nits
IP Rating	IP66	IP66	IP66
Operating Environment	Fully Outdoor	Fully Outdoor	Fully Outdoor
Operating Temperature	30°C~50°C	30°C~50°C	30°C~50°C
Operating Humidity	5%~98%	5%~98%	5%~98%
Operating Altitude	< 2000m	< 2000m	< 2000m
Media	HDMI In / Android / Windows	HDMI In / Android / Windows	HDMI In / Android / Windows
AC Input	100~240VAC±10% , 50/60 Hz	100~240VAC±10% , 50/60 Hz	100~240VAC±10% , 50/60 Hz
Panel			
Active Display Area (H x V mm)	1210 x 680	1428 x 803	1650 x 928
Aspect Ratio	16 : 9	16 : 9	16 : 9
Backlight Adjustment	Automatic	Automatic	Automatic
Viewing Angle	178°/178°	178°/178°	178°/178°
Backlight Type	Full Array Local Dimming LED	Full Array Local Dimming LED	Full Array Local Dimming LED
Operation Life (hours)	50,000	50,000	50,000
Mechanical (Single Sided)			
Dimensions (W x H x D)	775 x 2000 x 180mm	898 x 2100 x 180mm	1024 x 2150 x 180mm
Net Weight	125kg	185kg	275kg
Power			
Power Consumption	720w	1150w	1250w
Mechanical (Dual Sided)			
Dimensions (W x H x D)	775 x 2000 x 300mm	898 x 2100 x 320mm	1024 x 2150 x 320mm
Net Weight	215kg	285kg	340kg
Power			
Power Consumption	720w	1150w	1250w

Drive Thru Menu Boards



Single or Double-Sided, High Brightness Outdoor Display

- Size: 55"
- IP66 Rating
- -22 Degrees Fahrenheit to 122 Degrees Fahrenheit Operating Temp.
- Automatic Dimming with Light Sensor



Specifications

Panel	
Size	55"
Active Display Area (H x V mm)	1211 x 682
Resolution	1920 x 1080
Aspect Ratio	16:9
Brightness	4000 (typical) / 6000 (peak) Nits
Backlight Adjustment	Automatic (Ambien Light Sensor)
Viewing Angle	178°/178°
Backlight Type	Full Array Local Dimming LED
Operation Life (hours)	50,000
Mechanical	
Enclosure Material	Galvanized Steel + Aluminum
Finishing	Zinc Powder Coating + Fine Grain Powder Coating
Colour	Black (Ral9005)
Glass	AG Coating Tempered Glass, Back Painted Pantone Black C
Dimensions 1 Screen (W x H x D)	744 x 1913 x 325mm, 130kg
Dimensions 2 Screens (W x H x D)	1488 x 1913 x 325mm, 260kg
Power	
AC Input	100~240VAC±10% , 50/60 Hz
Power Consumption	120 w
Environment	
IP Rating	IP 66 (Display Unit)
Operating Environment	Fully Outdoor
Operating Temperature	-30°C~50°C
Operating Humidity	5%~98%
Operating Altitude	≤ 2000m
Media	
OS	HDMI (x1 / x2), 480i, 480P, 720p, 1080i, 1080p

Media Players & Video Processors

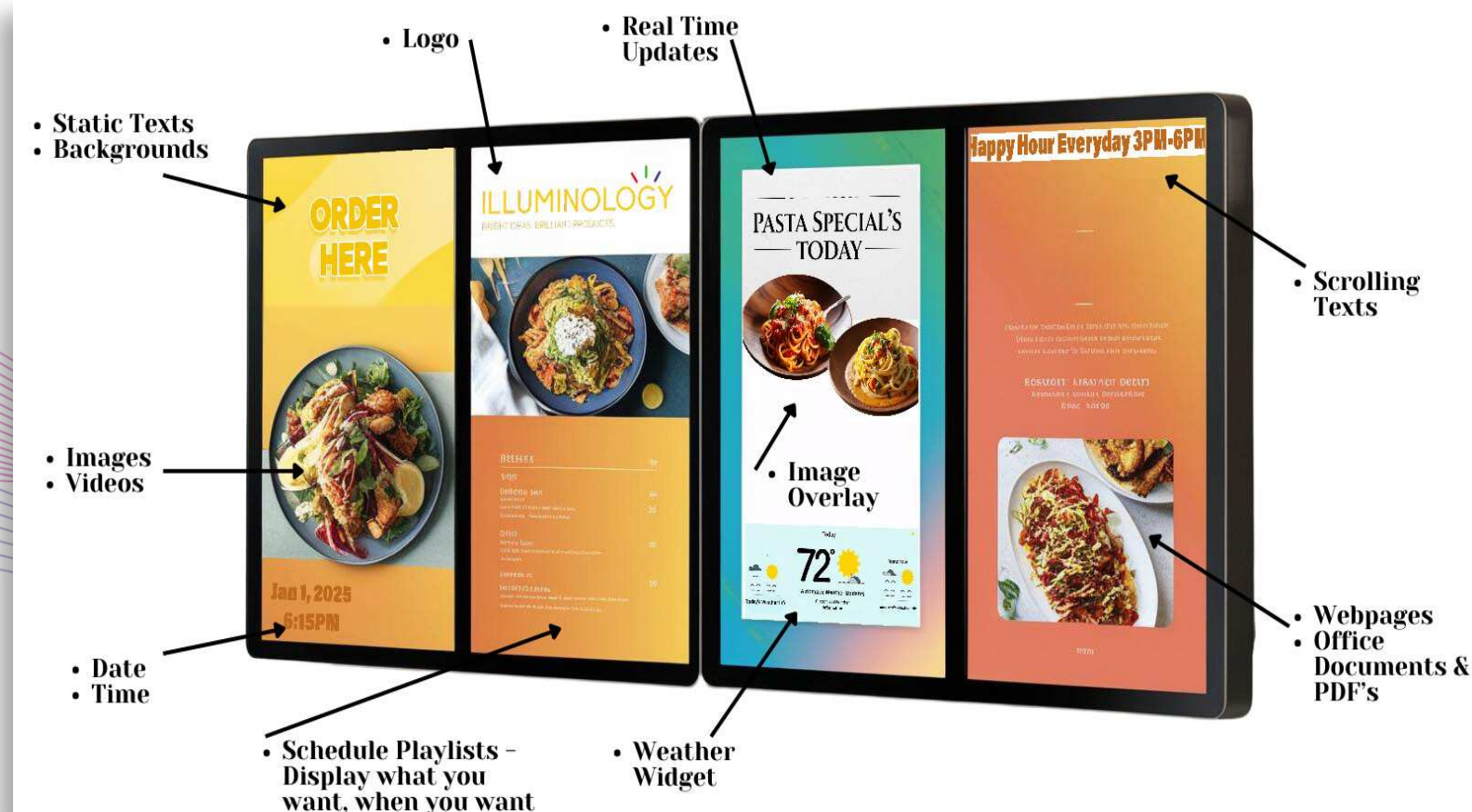
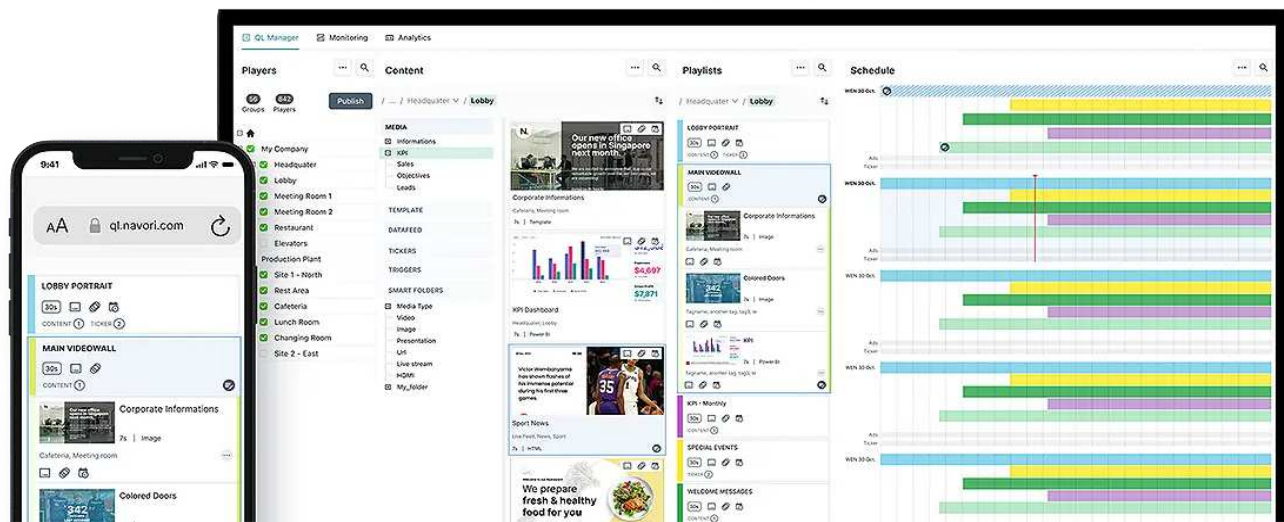
NAVORI LABS

World Leader in Digital Signage Software

- Navori Digital player software can turn any hardware into display signage
- Use Interactive Screen Software to create a dynamic experience for your customers
- Easily create, manage, and display dynamic content
- Streamline your content management process to ensure your digital signage displays are always up-to-date
- Deliver an immersive viewing experience with multi-screen content synchronization



Transform your Display with our Signage Software



■ StiX 3800



Intuitive Full-Featured CMS

Manage content across signage and locations with customizable UI.



Live Data Manager

Integrating live data from any third party to display on your digital signage.



Professional Template Designer

Drag and drop workflow. No coding required. Responsive to any format.



AI Audience Analytics

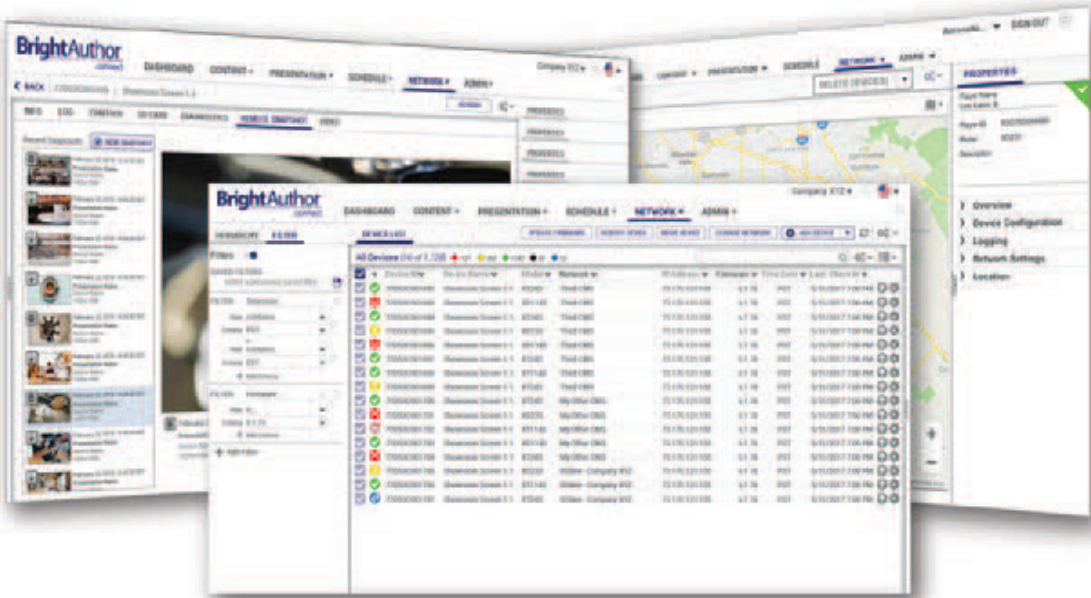
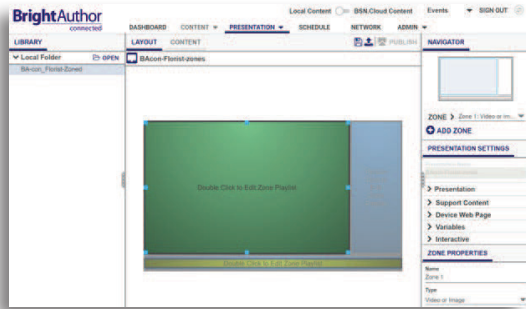
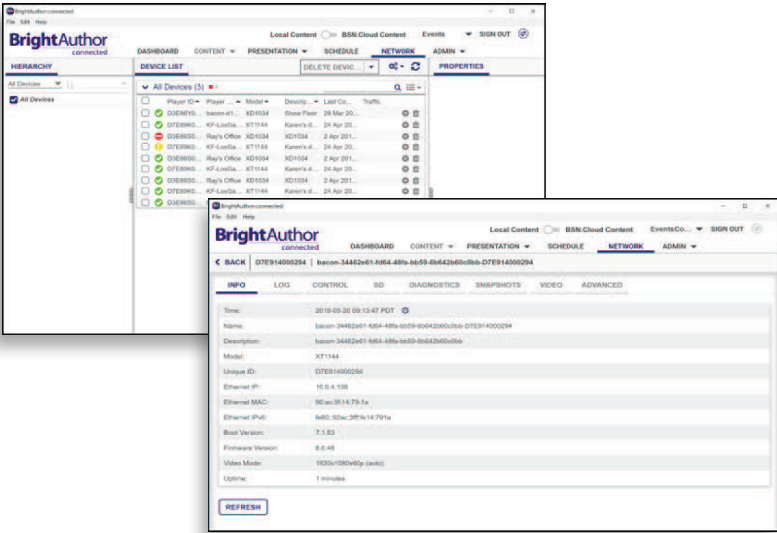
Track football around digital signage with actionable KPIs with SitX 3800 media player.

"Our 4000 screens have a more modern design and our customers love the new look."

LOTTO Christian Deutscher
Head of Marketing Lottery Products, Lotto Bayern

BrightSign®

- Offer real-time updates, news, and promotions to maintain interest.
- Enhance wayfinding with clear, user-friendly direction and maps.
- Encourage customer participation through touchscreens, QR codes, and gesture controls.
- Seamlessly merge multiple screens into one cohesive, visually appealing display.
- Save time and costs with simplified video wall systems and single-player distribution.
- Incorporate touch and gesture controls for immersive customer participation.
- Display various messages or visuals simultaneously, appealing to a broader audience.



Small Showcases

Make big impressions in tiny spaces.



- Flawless video playback
- Essential animations
- Flexible interactive options

Large Impressions

Dominate the landscape with vibrant visuals.



- Full HD or 4K model options
- Streaming video
- Streamlined deployment

Sleek, Self-Serve Kiosks

Elevate aesthetics and engagement.



- Choice of interactive ports
- POS integrations
- Vast integrated CMS options

Surprising Shapes and Sizes

Break the mold with unusual dynamic displays.



- Efficient all-in-one solution
- Versatile network possibilities
- Remote player management



Versatile & Dynamic

Multi-screen digital signage displays dynamic, engaging content across multiple screens, enabling versatile advertising, wayfinding, and information sharing in public or commercial spaces.



Inspire Loyalty

Harness digital signage to promote exclusive deals, flash sales, and loyalty programs to capture customer interest and increase in-store and online revenue.



Boost Sales

Showcase mouth-watering food images, live menu updates, and customer reviews to entice patrons and boost overall sales.



Create Excitement

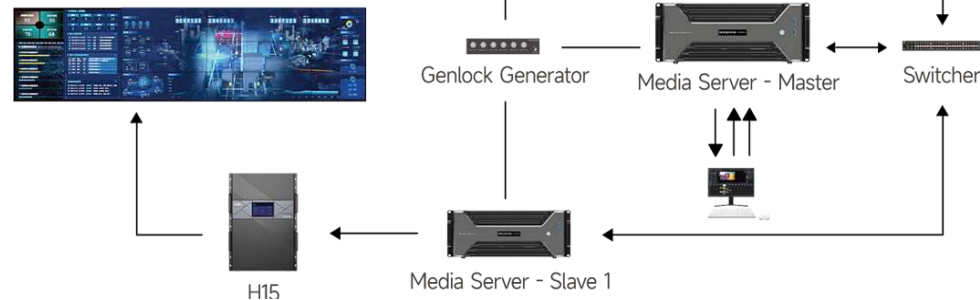
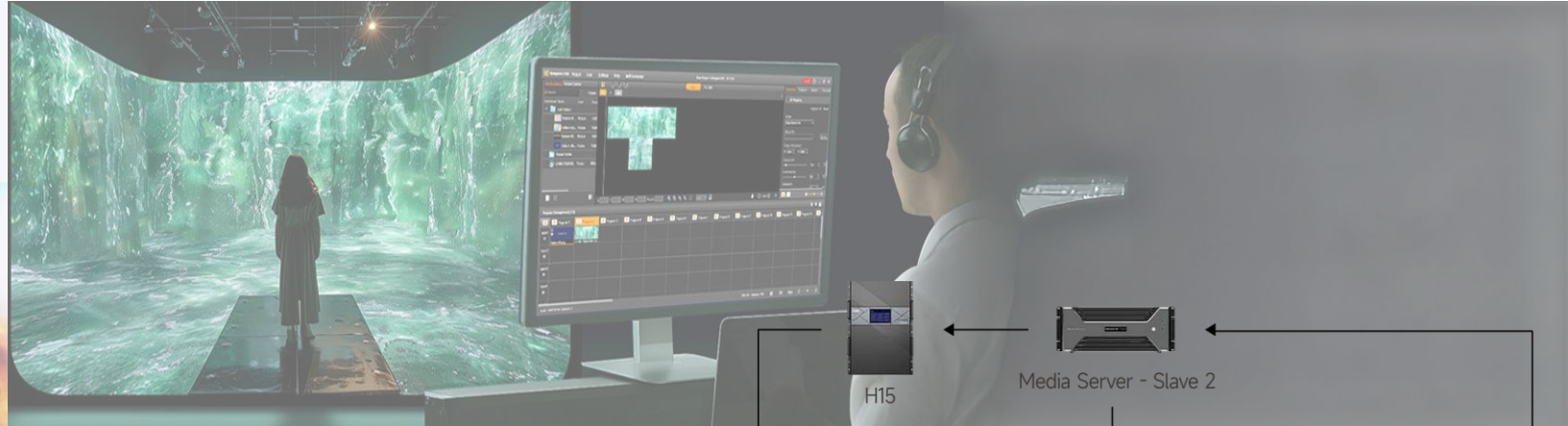
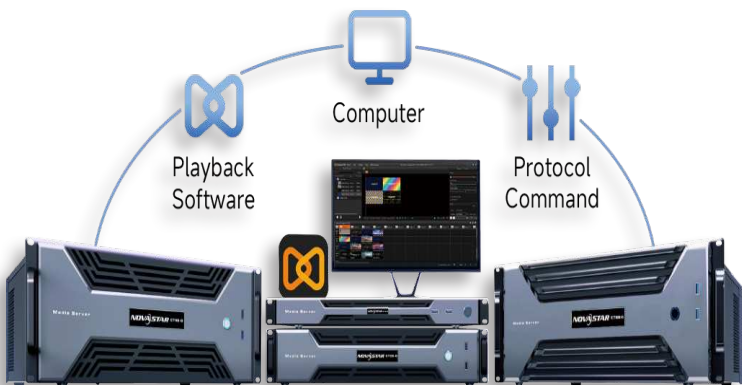
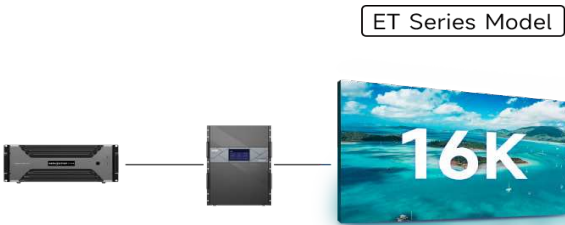
Display movie trailers, show-times, and concession offers to create excitement, enhance customer experience, and drive ticket and concession sales.



Elevate Your Brand and Tell Your Story With Immersive, Larger-Than-Life Displays



- Cutting-edge solutions that redefine the LED Display experience
- Groundbreaking control systems
- Superior Visual Quality
- Smarter Management Solutions
- A Full-chain control solution with enhanced monitoring and extended functionality
- Immersive experience center scenarios
- Stronger innovative thinking to effectively reduce costs
- Avoiding compatibility issues with multiple devices
- Control systems that enhance LED in creative scenarios, delivering captivating visuals and stunning effects
- An LED display ecosystem that evolves toward greater integration - smaller, sharper, and more user-friendly solutions



Ultra-high Load Capacity with Pixel-by-Pixel Output
For clear Display

Multi-function Integration
Simplified

GPU Hardware Decoding
Delivers Ultra-clear and Smooth Playback

Multi-server Cascading
Allows for Infinite Expansion of the Display

HDR Ultra High-Definition Display
Restoring Reality

Cave immersive Creative Display
Beyond imagination

Diverse and Flexible Control
Full-Screen at Your Fingertips

Comprehensive protection of digital assets
Ensuring robust security

Subjected to high-temp and extended rigorous testing
Ensuring long-term stable operation without stress



Pad



Protocol
Command

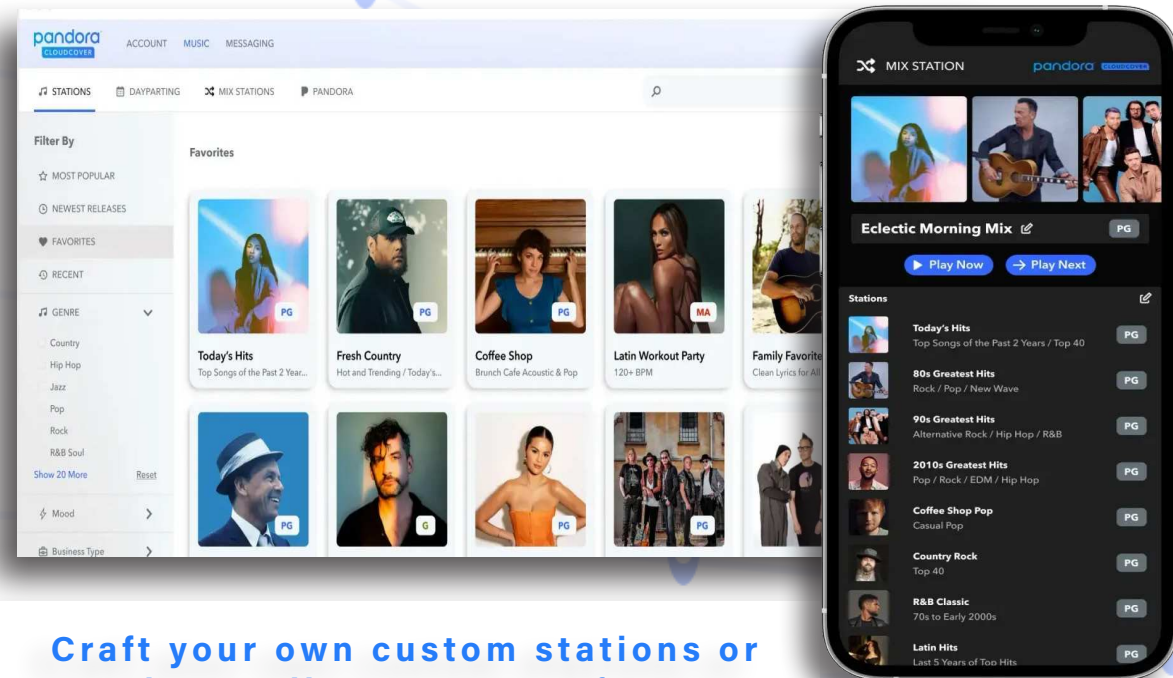


Cloud
Control





Custom Music Solutions That Scale With Your Business



Craft your own custom stations or explore a diverse array of genre stations, spanning every mood, style, and era. The ideal sound for your business is just a few clicks away.

From custom station curation to overhead audio messaging to company-wide controls, Illuminology is proud to partner with CloudCover.

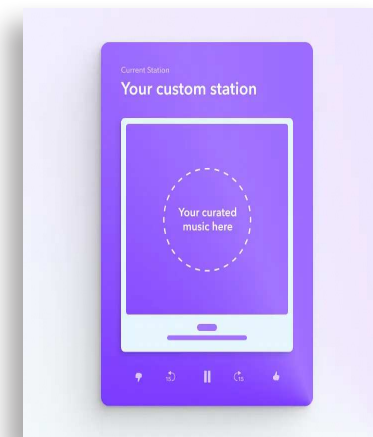
We have all of the tools to help enhance the on-site experience across every location with a uniquely personalized listening experience fully licensed for business

Over 200 Stations Curated Specifically for Businesses. Hundreds of Stations Spanning Every Genre, Mood, and Era.

Get A Running Start With Our Setup Services

BrandMatch Music Analysis & Custom Station Curation

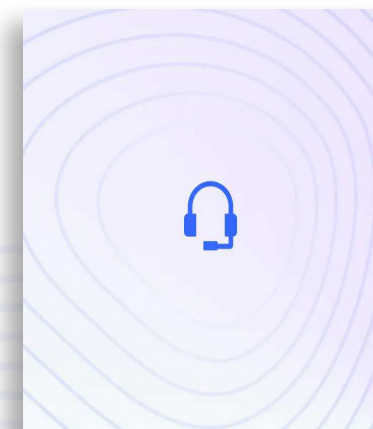
Work with our Music Team to create a totally unique and branded sound for your business. Following our proprietary Brand-Match process, our professional musicologists will perform a full brand analysis and curate music stations tailor-fit to the environment you're trying to cultivate.



Equipment Installation

Illuminology and CloudCover have partners across the United States and Canada who can offer design, planning, financing and installation services to help scale enterprise projects spanning hundreds or thousands of locations.

With over 1000 service locations across the country, we have your audio visual needs covered, no matter the size of your



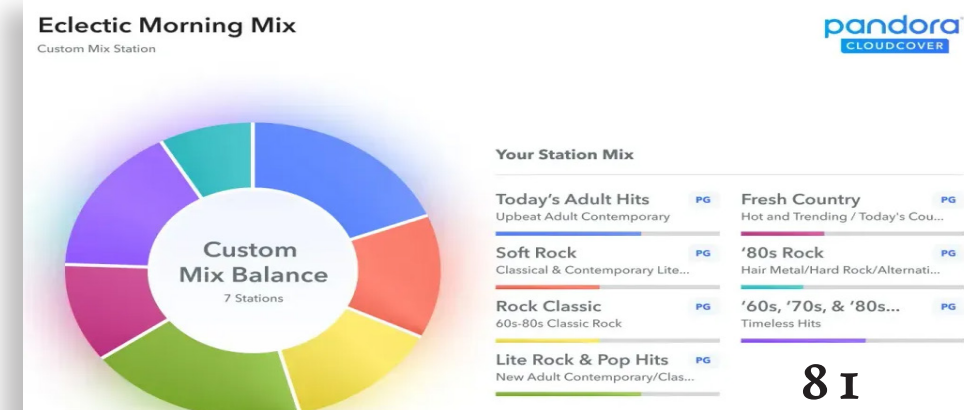
Dedicated Customer Success Representative

We prioritize the success of our enterprise clients, which is why we provide a dedicated Customer Success Manager to guide you through every step of your journey with us. Your designated expert will ensure seamless integration, tailored solutions, and ongoing support, so you can maximize the benefits of CloudCover for your business.



Create the Perfect Vibe with Custom Stations and Mixes

Craft your own personalized mix stations to enjoy a seamless flow of music perfectly tailored to your unique business.



INNOVATIVE

CASH REGISTER SYSTEMS



Your Digital Signage Journey Begins Here

Thank you for exploring our collection!